

# Recombinant Human MSI1 Protein, Myc/DDK-tagged, C13 and N15-labeled

**Cat. No.** MSI1-479H    **Lot. No.** (See product label)

## SPECIFICATION

<b>Product Overview</b>	MSI1 MS Standard C13 and N15-labeled recombinant protein (NP_002433) with a C-terminal MYC/DDK tag, was expressed in HEK293 cells.
<b>Species</b>	Human
<b>Source</b>	HEK293
<b>Description</b>	This gene encodes a protein containing two conserved tandem RNA recognition motifs. Similar proteins in other species function as RNA-binding proteins and play central roles in posttranscriptional gene regulation. Expression of this gene has been correlated with the grade of the malignancy and proliferative activity in gliomas and melanomas. A pseudogene for this gene is located on chromosome 11q13.
<b>Molecular Mass</b>	38.9 kDa
<b>AA Sequence</b>	METDAPQPGLASPDSPHDPCKMFIGGLSWQTTQEGLREYFGQFGEVKECLVMRDP LTKRSRGFGFVTFMDQAGVDKVLAAQSRHELDSTIDPKVAFPRRAQPKMVTRTKKIF VGGLSVNTTVEDVKQYFEQFGKVDAMLMFDKTTNRHRGFGFVTFESEDIVEKVCE IHFHEINNKMVECKKAQPKEVMSPTGSARGRSRVMPYGMDFMLGIGMLGYPGFQ ATTYASRSYTGAPGYTYQFPEFRVERTPLPSAPVLPeltaIPLTAYGPMAAAAAAAAA VVRGTGSHPWMTAPPPGSTPSRTGGFLGTTSPGMAELYGAANQDSGVSSYISAA SPAPSTGFGHSLGGPLIATAFTNGYHTRTRPLEQKLISEEDLAANDILDYKDDDDKV
<b>Purity</b>	> 80% as determined by SDS-PAGE and Coomassie blue staining

 Tel: 1-631-559-9269    1-516-512-3133

 Email: [info@creative-biomart.com](mailto:info@creative-biomart.com)     Fax: 1-631-938-8127

 45-1 Ramsey Road, Shirley, NY 11967, USA

<b>Stability</b>	Stable for 3 months from receipt of products under proper storage and handling conditions.
<b>Storage</b>	Store at -80 centigrade. Avoid repeated freeze-thaw cycles.
<b>Concentration</b>	50 µg/mL as determined by BCA
<b>Storage Buffer</b>	100 mM glycine, 25 mM Tris-HCl, pH 7.3.

## GENE INFORMATION

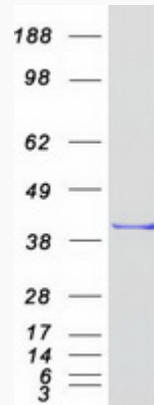
<b>Gene Name</b>	MSI1 musashi RNA binding protein 1 [ Homo sapiens (human) ]
<b>Official Symbol</b>	MSI1
<b>Synonyms</b>	MSI1; musashi homolog 1 (Drosophila); Musashi (Drosophila) homolog 1; RNA-binding protein Musashi homolog 1; musashi1; musashi-1;
<b>Gene ID</b>	4440
<b>mRNA Refseq</b>	NM_002442
<b>Protein Refseq</b>	NP_002433
<b>MIM</b>	603328
<b>UniProt ID</b>	O43347

 Tel: 1-631-559-9269 1-516-512-3133

 Email: [info@creative-biomart.com](mailto:info@creative-biomart.com)  Fax: 1-631-938-8127

 45-1 Ramsey Road, Shirley, NY 11967, USA

SDS-PAGE



 Tel: 1-631-559-9269 1-516-512-3133

 Email: [info@creative-biomart.com](mailto:info@creative-biomart.com)  Fax: 1-631-938-8127

 45-1 Ramsey Road, Shirley, NY 11967, USA