

## Recombinant Human MSI1 Protein, GST-tagged

Cat. No. MSI1-5653H Lot. No. (See product label)

### SPECIFICATION

<b>Product Overview</b>	Human MSI1 full-length ORF ( NP_002433.1, 1 a.a. - 362 a.a.) recombinant protein with GST-tag at N-terminal.
<b>Species</b>	Human
<b>Source</b>	Wheat Germ
<b>Description</b>	This gene encodes a protein containing two conserved tandem RNA recognition motifs. Similar proteins in other species function as RNA-binding proteins and play central roles in posttranscriptional gene regulation. Expression of this gene has been correlated with the grade of the malignancy and proliferative activity in gliomas and melanomas. A pseudogene for this gene is located on chromosome 11q13. [provided by RefSeq]
<b>Molecular Mass</b>	65.5 kDa
<b>AA Sequence</b>	METDAPQPGLASPDSPHDPCKMFIGGLSWQTTQEGLREYFGQFGEVKECLVMRDP LTKRSRGFGFVTFMDQAGVDKVLQSRHELDSTIDPKVAFPRRAQPKMVTRTKKIF VGGLSVNTTVEDVKQYFEQFGKVDAMLMFDKTTNRHRGFGFVTFESEDIVEKVCE IHFHEINNMVECKKAQPKEVMSPTGSARGRSRVMPYGMDFMLGIGMLGYPGFQ ATTYASRSYTGAPGYTYQFPEFRVERTPLPSAPVLPELTAIPLTAYGPMAAAAAAAAA VVRGTGSHPWMTAPPPGSTPSRTGGFLGTTSPGMAELYGAANQDSGVSSYISAA SPAPSTGFGHSLGGPLIATAFTNGYH
<b>Applications</b>	Enzyme-linked Immunoabsorbent Assay

 Tel: 1-631-559-9269 1-516-512-3133

 Email: [info@creative-biomart.com](mailto:info@creative-biomart.com)  Fax: 1-631-938-8127

 45-1 Ramsey Road, Shirley, NY 11967, USA

Western Blot (Recombinant protein)  
 Antibody Production  
 Protein Array

<b>Notes</b>	Best use within three months from the date of receipt of this protein.
<b>Storage</b>	Store at -80 centigrade. Aliquot to avoid repeated freezing and thawing.
<b>Storage Buffer</b>	50 mM Tris-HCl, 10 mM reduced Glutathione, pH=8.0 in the elution buffer.

## GENE INFORMATION

<b>Gene Name</b>	<a href="#">MSI1 musashi homolog 1 (Drosophila) [ Homo sapiens ]</a>
<b>Official Symbol</b>	<a href="#">MSI1</a>
<b>Synonyms</b>	MSI1; musashi homolog 1 (Drosophila); Musashi (Drosophila) homolog 1; RNA-binding protein Musashi homolog 1; musashi1; musashi-1;
<b>Gene ID</b>	<a href="#">4440</a>
<b>mRNA Refseq</b>	<a href="#">NM_002442</a>
<b>Protein Refseq</b>	<a href="#">NP_002433</a>
<b>MIM</b>	<a href="#">603328</a>
<b>UniProt ID</b>	<a href="#">O43347</a>

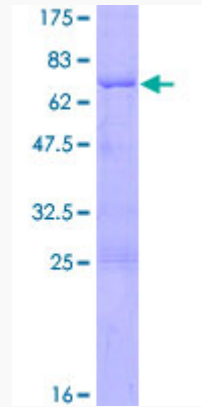
 Tel: 1-631-559-9269 1-516-512-3133

 Email: [info@creative-biomart.com](mailto:info@creative-biomart.com)  Fax: 1-631-938-8127

 45-1 Ramsey Road, Shirley, NY 11967, USA

**Quality Control**

**Testing:**



12.5% SDS-PAGE Stained with Coomassie Blue.

 Tel: 1-631-559-9269 1-516-512-3133

 Email: [info@creative-biomart.com](mailto:info@creative-biomart.com)  Fax: 1-631-938-8127

 45-1 Ramsey Road, Shirley, NY 11967, USA