

Recombinant Full Length Human MSI2 Protein, C-Flag-tagged

Cat. No. MSI2-386HFL Lot. No. (See product label)

SPECIFICATION

Product Overview Recombinant Full Length Human MSI2 Protein, fused to Flag-tag at C-terminus, was expressed in Mammalian cells.

Species Human

Source Mammalian Cells

Description This gene encodes an RNA-binding protein that is a member of the Musashi protein family. The encoded protein is transcriptional regulator that targets genes involved in development and cell cycle regulation. Mutations in this gene are associated with poor prognosis in certain types of cancers. This gene has also been shown to be rearranged in certain cancer cells.

Form 25 mM Tris HCl, pH 7.3, 100 mM glycine, 10% glycerol.

Molecular Mass 35 kDa

AA Sequence

```

MEANGSQGTSGSANDSQHDPGKMFIGGLSWQTSPDSL RDYFSKFGEIRECMVMR
DPTTKRSRFGFGVTFADPASVDKVLGQPHHELD SKTIDPKVAFPRRAQPKMVRTK
KIFVGGLSANTVVEDVKQYFEQFGKVEDAM LMFDKTTNRHRGFGVTFENEDVVE
KVCEIHFHEINNMVECKKAQPKVMFPPGTRGRARGLPYTMDAF MLGMGMLGYP
NFVATYGRGYPGFAPSYGYQFPGFPAAYGPVAAA AVAAAARGSGSNPARPGGFPG
ANSPG
PVADLYGPASQDSGVGN YISAASPQPGSGFGHGIAGPLIATAFTNGYHSGPTRTRPL
EQKLISEEDLAANDILDYKDDDDKV
    
```

 Tel: 1-631-559-9269 1-516-512-3133

 Email: info@creative-biomart.com  Fax: 1-631-938-8127

 45-1 Ramsey Road, Shirley, NY 11967, USA

Purity	> 80% as determined by SDS-PAGE and Coomassie blue staining.
Stability	Stable for 12 months from the date of receipt of the product under proper storage and handling conditions. Avoid repeated freeze-thaw cycles.
Storage	Store at -80 centigrade.
Concentration	>50 ug/mL as determined by microplate BCA method.
Preparation	Recombinant protein was captured through anti-DDK affinity column followed by conventional chromatography steps.
Full Length	Full L.

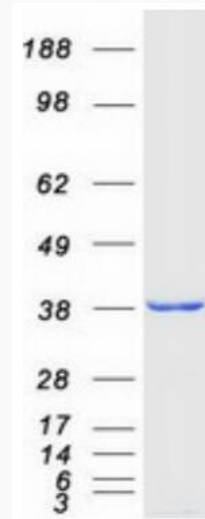
GENE INFORMATION

Gene Name	MSI2 musashi RNA binding protein 2 [Homo sapiens (human)]
Official Symbol	MSI2
Synonyms	MSI2H
Gene ID	124540
mRNA Refseq	NM_138962.4
Protein Refseq	NP_620412.1
MIM	607897
UniProt ID	Q96DH6

 Tel: 1-631-559-9269 1-516-512-3133

 Email: info@creative-biomart.com  Fax: 1-631-938-8127

 45-1 Ramsey Road, Shirley, NY 11967, USA



Coomassie blue staining of purified MSI2 protein.

 Tel: 1-631-559-9269 1-516-512-3133

 Email: info@creative-biomart.com  Fax: 1-631-938-8127

 45-1 Ramsey Road, Shirley, NY 11967, USA