

# Recombinant Human MSI2 Protein, Myc/DDK-tagged, C13 and N15-labeled

**Cat. No.** MSI2-4221H    **Lot. No.** (See product label)

## SPECIFICATION

### Product Overview

MSI2 MS Standard C13 and N15-labeled recombinant protein (NP\_620412) with a C-terminal MYC/DDK tag, was expressed in HEK293 cells.

### Species

Human

### Source

HEK293

### Description

This gene encodes an RNA-binding protein that is a member of the Musashi protein family. The encoded protein is transcriptional regulator that targets genes involved in development and cell cycle regulation. Mutations in this gene are associated with poor prognosis in certain types of cancers. This gene has also been shown to be rearranged in certain cancer cells.

### Molecular Mass

35.2 kDa

### AA Sequence

```
MEANGSQGTSGSANDSQHDPGKMFIGGLSWQTSPDSL RDYFSKFGEIRECMVMR
DPTTKRSRGGFVTFADPASVDKVLGQPHHELD SKTIDPKVAFPRRAQPKMVTRTK
KIFVGGLSANTVVEDVKQYFEQFGKVEDAMLMFDKTTNRHRGFGFVTFENEDVVEK
VCEIHFHEINNKMVECKKAQPKEVMFPPGTRGRARGLPYTMDAFMLGMGMLGYPN
FVATYGRGYPGFAPSYGYQFPGFPAAAYGPVAAA AAAAAARGSGSNPARPGGFPGA
NSPGPVADLYGPASQDSGVGN YISAASPQPGSGFGHGIAGPLIATAFTNGYHSGPT
RTRPLEQKLISEEDLAANDILDYKDDDDKV
```

### Purity

> 80% as determined by SDS-PAGE and Coomassie blue staining

 Tel: 1-631-559-9269    1-516-512-3133

 Email: [info@creative-biomart.com](mailto:info@creative-biomart.com)     Fax: 1-631-938-8127

 45-1 Ramsey Road, Shirley, NY 11967, USA

<b>Stability</b>	Stable for 3 months from receipt of products under proper storage and handling conditions.
<b>Storage</b>	Store at -80 centigrade. Avoid repeated freeze-thaw cycles.
<b>Concentration</b>	50 µg/mL as determined by BCA
<b>Storage Buffer</b>	100 mM glycine, 25 mM Tris-HCl, pH 7.3.

## GENE INFORMATION

<b>Gene Name</b>	MSI2 musashi RNA binding protein 2 [ Homo sapiens (human) ]
<b>Official Symbol</b>	MSI2
<b>Synonyms</b>	MSI2; musashi homolog 2 (Drosophila); RNA-binding protein Musashi homolog 2; musashi-2; MSI2H; MGC3245; FLJ36569;
<b>Gene ID</b>	124540
<b>mRNA Refseq</b>	NM_138962
<b>Protein Refseq</b>	NP_620412
<b>MIM</b>	607897
<b>UniProt ID</b>	Q96DH6

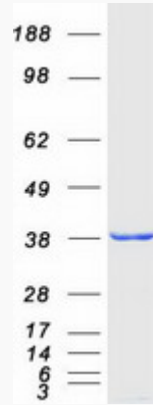
 Tel: 1-631-559-9269 1-516-512-3133

 Email: [info@creative-biomart.com](mailto:info@creative-biomart.com)  Fax: 1-631-938-8127

 45-1 Ramsey Road, Shirley, NY 11967, USA



SDS-PAGE



Tel: 1-631-559-9269 1-516-512-3133

Email: [info@creative-biomart.com](mailto:info@creative-biomart.com) Fax: 1-631-938-8127

45-1 Ramsey Road, Shirley, NY 11967, USA