

Recombinant Human MSL2 Protein, GST-tagged

Cat. No. MSL2-5656H **Lot. No.** (See product label)

SPECIFICATION

Product Overview	Human MSL2L1 full-length ORF (NP_060603.2, 1 a.a. - 577 a.a.) recombinant protein with GST-tag at N-terminal.
Species	Human
Source	Wheat Germ
Description	MSL2 (MSL Complex Subunit 2) is a Protein Coding gene. Among its related pathways are Chromatin organization. GO annotations related to this gene include ligase activity.
Molecular Mass	88.9 kDa
AA Sequence	<p>MNPVNATALYISASRLVVLNYDPGDPKAFTEINRLLPYFRQSLSCCVCGHLLQDPIAPT NSTCQHYVCKTCKGKKMMMKPSCSWCKDYEQFEENKQLSILVNCYKKLCEYITQTT LARDIIEAVDCSSDILALLNDGSLFCEETEKPSDSSFTLCLTHSPLPSTSEPTTDPQAS LSPMSESTLSIAIGSSVINGLPTYNGLSIDRFGINIPSPEHSNTIDVCNTVDIKTEDLSDS LPPVCDTVATDLCSTGIDICFSEDIKPGDSELLSVVEVLRSLTVSNTEVCCPNLQP NLEATVSNPFLQLSSQSLSHNVFMSTSPALHGLSCTAATPKIAKLNKRKRSESDS EKVQPLPISTIIRGPTLGASAPVTVKRESKISLQPIATVPNGGTTPKISKTVLLSTKSMK KSHEHGSKKSHSKTKPGILKKDKAVKEKIPSHHFMPGSPTKTVYKKPQEKKGCKCG RATQNPSVLTCRGQRCPYCYSNRKACLDCICRGQCNSYMANGEKKLEAFVPEKAL EQRTLTLGINVTSIAVRNASTSTSVINVTGSPVTTFLAASHDDKSLDEAIDMRFDC</p>
Applications	Enzyme-linked Immunoabsorbent Assay

 Tel: 1-631-559-9269 1-516-512-3133

 Email: info@creative-biomart.com  Fax: 1-631-938-8127

 45-1 Ramsey Road, Shirley, NY 11967, USA

Western Blot (Recombinant protein)
 Antibody Production
 Protein Array

Notes	Best use within three months from the date of receipt of this protein.
Storage	Store at -80 centigrade. Aliquot to avoid repeated freezing and thawing.
Storage Buffer	50 mM Tris-HCl, 10 mM reduced Glutathione, pH=8.0 in the elution buffer.

GENE INFORMATION

Gene Name	MSL2 male-specific lethal 2 homolog (Drosophila) [Homo sapiens]
Official Symbol	MSL2
Synonyms	MSL2; male-specific lethal 2 homolog (Drosophila); male specific lethal 2 like 1 (Drosophila) , MSL2L1, ring finger protein 184 , RNF184; male-specific lethal 2 homolog; FLJ10546; KIAA1585; male specific lethal 2 homolog (Drosophila); msl 2; MSL2-like 1; ring finger protein 184; male-specific lethal 2-like 1; male-specific lethal-2 homolog 1; MSL-2; MSL2L1; RNF184; FLJ54913;
Gene ID	55167
mRNA Refseq	NM_001145417
Protein Refseq	NP_001138889
UniProt ID	Q9HCI7

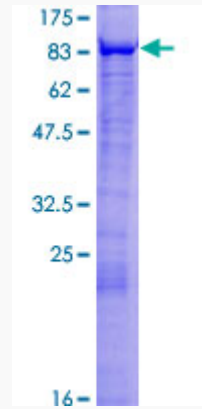
 Tel: 1-631-559-9269 1-516-512-3133

 Email: info@creative-biomart.com  Fax: 1-631-938-8127

 45-1 Ramsey Road, Shirley, NY 11967, USA

Quality Control

Testing:



12.5% SDS-PAGE Stained with Coomassie Blue.

 Tel: 1-631-559-9269 1-516-512-3133

 Email: info@creative-biomart.com  Fax: 1-631-938-8127

 45-1 Ramsey Road, Shirley, NY 11967, USA