

Recombinant Human MSL3 Protein, Myc/DDK-tagged, C13 and N15-labeled

Cat. No. MSL3-5290H **Lot. No.** (See product label)

SPECIFICATION

Product Overview	MSL3 MS Standard C13 and N15-labeled recombinant protein (NP_523353) with a C-terminal MYC/DDK tag, was expressed in HEK293 cells.
Species	Human
Source	HEK293
Description	This gene encodes a nuclear protein that is similar to the product of the Drosophila male-specific lethal-3 gene. The Drosophila protein plays a critical role in a dosage-compensation pathway, which equalizes X-linked gene expression in males and females. Thus, the human protein is thought to play a similar function in chromatin remodeling and transcriptional regulation, and it has been found as part of a complex that is responsible for histone H4 lysine-16 acetylation. This gene can undergo X inactivation. Alternative splicing results in multiple transcript variants. Related pseudogenes have been identified on chromosomes 2, 7 and 8.
Molecular Mass	59.8 kDa
AA Sequence	MSASEGMKFKFHSGEKVLCPFDPDKARVLYDAKIVDVIVGKDEKGRKIPEYLIHFNG WNRSWDRWAAEDHVLDRDTEENRRLQRKLARKAVARLRSTGRKKKRCRLPGVDSV LKGLPTEEKDENDENSLSSSSDCSENKDEEISEESDIEEKTEVKEEPELQTRREMEE RTITIEIPEVLKQLEDDCYINRRKRLVKLPCQTNIIILESYVKHFAINAAFSANERPR HHHVMPHANMNVHYIPAENVDLCKEMVDGLRITFDYTLPLVLLYPYEQAYKKVTS

 Tel: 1-631-559-9269 1-516-512-3133

 Email: info@creative-biomart.com  Fax: 1-631-938-8127

 45-1 Ramsey Road, Shirley, NY 11967, USA



SKFFLPIKESATSTNRSQEELSPSPLLNPSTPQSTESQPTTGEPATPKRRKAEPEAL
 QSLRRSTRHSANCDRLSESSASPQPKRRQQDTSASMPKFLHLEKKTVPVHSRSSSP
 IPLTPSKEGSAVFAGFEGRRRTNEINEVLSWKLVPDNYPPGDQPPPPSYIYGAQHLLR
 LFVKLPEILGKMSFSEKNLKALLKHFDLFLRFLAEYHDDFFPESAYVAACEAHYSTKN
 PRAIYTRTRPLEQKLISEEDLAANDILDYKDDDDKV

Purity > 80% as determined by SDS-PAGE and Coomassie blue staining

Stability Stable for 3 months from receipt of products under proper storage and handling conditions.

Storage Store at -80 centigrade. Avoid repeated freeze-thaw cycles.

Concentration 50 µg/mL as determined by BCA

Storage Buffer 100 mM glycine, 25 mM Tris-HCl, pH 7.3.

GENE INFORMATION

Gene Name [MSL3 MSL complex subunit 3 \[Homo sapiens \(human\) \]](#)

Official Symbol [MSL3](#)

Synonyms MSL3; male-specific lethal 3 homolog (Drosophila); male specific lethal 3 like 1 (Drosophila), male specific lethal 3 (Drosophila) like 1, MSL3L1; male-specific lethal 3 homolog; MSL3-like 1; male-specific lethal-3 protein-like 1; MSL3L1; DKFZp586J1822;

Gene ID [10943](#)

mRNA Refseq [NM_078629](#)

Tel: 1-631-559-9269 1-516-512-3133

Email: info@creative-biomart.com Fax: 1-631-938-8127

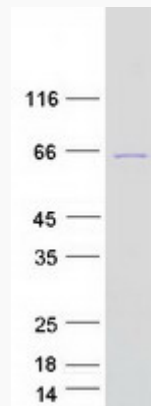
45-1 Ramsey Road, Shirley, NY 11967, USA

Protein Refseq NP_523353

MIM 300609

UniProt ID Q8N5Y2

SDS-PAGE



 Tel: 1-631-559-9269 1-516-512-3133

 Email: info@creative-biomart.com  Fax: 1-631-938-8127

 45-1 Ramsey Road, Shirley, NY 11967, USA