

## Recombinant Human MSL3 Protein, GST-tagged

**Cat. No.** MSL3-5657H    **Lot. No.** (See product label)

### SPECIFICATION

<b>Product Overview</b>	Human MSL3L1 full-length ORF ( AAH31210.1, 1 a.a. - 521 a.a.) recombinant protein with GST-tag at N-terminal.
<b>Species</b>	Human
<b>Source</b>	Wheat Germ
<b>Description</b>	This gene encodes a nuclear protein and has similarity to drosophila male-specific lethal-3 gene. The drosophila protein plays a critical role in a dosage-compensation pathway, which equalizes X-linked gene expression in males and females. Thus this encoded protein is thought to play a similar function in chromatin remodeling and transcriptional regulation. This gene has been found to undergo X inactivation. There are four alternatively spliced transcript variants of this gene encoding different isoforms. [provided by RefSeq]
<b>Molecular Mass</b>	86.2 kDa
<b>AA Sequence</b>	MSASEGMKFKFHSGEKVLCFEPDPTKARVLYDAKIVDVIVGKDEKGRKIPEYLIHFNG WNRSWDRWAAEDHVLDRDTEENRRLQRKLARKAVARLRSTGRKKKRCRLPGVDSV LKGLPTEEKDENDENSLSSSSDCSENKDEEISEESDIEEKTEVKEEPELQTRREMEE RTITIEIPEVLKQLEDDCYINRRKRLVKLPCQTNIIILESYVKHFAINAAFSANERPR HHHVMPHANMNVHYIPAENVDLCKEMVDGLRITFDYTLPLVLLYPYEQAYKKVTS SKFFLPIKESATSTNRSQEELSPSPLLNPSTPQSTESQPTTGEPATPKRRKAEPEAL QSLRRSTRHSANCDRLSESSASPQPKRRQQDTSASMPKFLHLEKKTPVHSRSSSP

 Tel: 1-631-559-9269    1-516-512-3133

 Email: [info@creative-biomart.com](mailto:info@creative-biomart.com)     Fax: 1-631-938-8127

 45-1 Ramsey Road, Shirley, NY 11967, USA

IPLTPSKEGSAVFAGFEGRRRTNEINEVLSWKLVPDNYPPGDQPPPPSYIYGAQHLLR  
 LFVKLPEILGKMSFSEKNLKALLKHFDLFLRFLAEYHDDFFPESAYVAACEAHYSTKN  
 PRAIY

<b>Applications</b>	Enzyme-linked Immunoabsorbent Assay Western Blot (Recombinant protein) Antibody Production Protein Array
<b>Notes</b>	Best use within three months from the date of receipt of this protein.
<b>Storage</b>	Store at -80 centigrade. Aliquot to avoid repeated freezing and thawing.
<b>Storage Buffer</b>	50 mM Tris-HCl, 10 mM reduced Glutathione, pH=8.0 in the elution buffer.

## GENE INFORMATION

<b>Gene Name</b>	MSL3 male-specific lethal 3 homolog (Drosophila) [ Homo sapiens ]
<b>Official Symbol</b>	MSL3
<b>Synonyms</b>	MSL3; male-specific lethal 3 homolog (Drosophila); male specific lethal 3 like 1 (Drosophila) , male specific lethal 3 (Drosophila) like 1 , MSL3L1; male-specific lethal 3 homolog; MSL3-like 1; male-specific lethal-3 protein-like 1; MSL3L1; DKFZp586J1822;
<b>Gene ID</b>	10943
<b>mRNA Refseq</b>	NM_001193270
<b>Protein Refseq</b>	NP_001180199

 Tel: 1-631-559-9269 1-516-512-3133

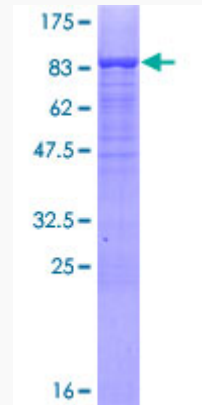
 Email: [info@creative-biomart.com](mailto:info@creative-biomart.com)  Fax: 1-631-938-8127

 45-1 Ramsey Road, Shirley, NY 11967, USA

**MIM** 300609

**UniProt ID** Q8N5Y2

**Quality Control  
Testing:**



12.5% SDS-PAGE Stained with Coomassie Blue.

 Tel: 1-631-559-9269 1-516-512-3133

 Email: [info@creative-biomart.com](mailto:info@creative-biomart.com)  Fax: 1-631-938-8127

 45-1 Ramsey Road, Shirley, NY 11967, USA