

Recombinant Cynomolgus MSLN Protein, Asp296-Gly580, C-His tagged, Biotinylated

Cat. No. MSLN-006C Lot. No. (See product label)

SPECIFICATION

Product Overview	Recombinant Cynomolgus MSLN/Mesothelin-C-His protein was developed from HEK293 and has a target region of C-His.
Species	Cynomolgus
Source	HEK293
ProteinLength	Asp296-Gly580
Description	This gene encodes a preproprotein that is proteolytically processed to generate two protein products, megakaryocyte potentiating factor and mesothelin. Megakaryocyte potentiating factor functions as a cytokine that can stimulate colony formation of bone marrow megakaryocytes. Mesothelin is a glycosylphosphatidylinositol-anchored cell-surface protein that may function as a cell adhesion protein. This protein is overexpressed in epithelial mesotheliomas, ovarian cancers and in specific squamous cell carcinomas. Alternative splicing results in multiple transcript variants, at least one of which encodes an isoform that is proteolytically processed.
Conjugation/Label	Biotin
Form	Lyophilised
Endotoxin	Endotoxin level was found to be less than 0.1 ng/μg (1 EU/μg).

 Tel: 1-631-559-9269 1-516-512-3133

 Email: info@creative-biomart.com  Fax: 1-631-938-8127

 45-1 Ramsey Road, Shirley, NY 11967, USA

Notes	FOR RESEARCH USE ONLY (RUO).
Storage	The lyophilized protein is stable for at least 1 year from date of receipt at -20 centigrade.
Storage Buffer	Lyophilised from 0.2 µm filtered PBS solution pH 7.4. Upon receipt centrifuge vial to ensure maximal product extraction, recommended: 20 sec, 5K RPM
Conjugation	Biotin

GENE INFORMATION

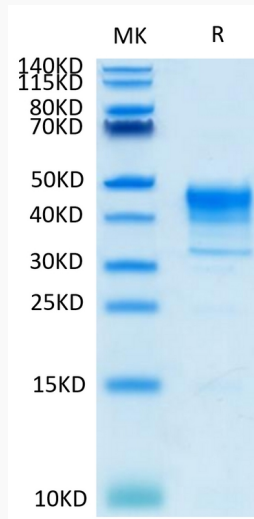
Gene Name	MSLN mesothelin [<i>Macaca mulatta</i> (Rhesus monkey)]
Official Symbol	MSLN
Synonyms	MSLN; mesothelin;
Gene ID	698095
mRNA Refseq	XM_028840606
Protein Refseq	XP_028696439
UniProt ID	G7NQF2

 Tel: 1-631-559-9269 1-516-512-3133

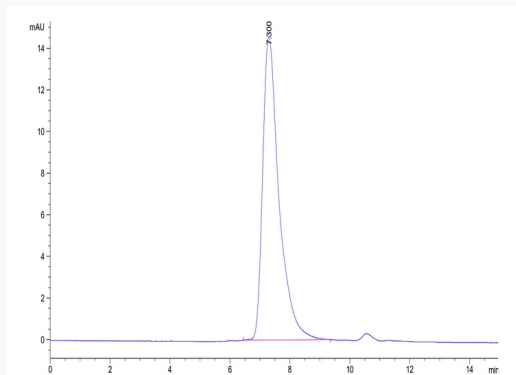
 Email: info@creative-biomart.com  Fax: 1-631-938-8127

 45-1 Ramsey Road, Shirley, NY 11967, USA

**Biotinylated
Cynomolgus MSLN
on Tris-Bis PAGE
under reduced
condition. The purity
is greater than 95%.**



**The purity of
Biotinylated
Cynomolgus MSLN
is greater than 95%
as determined by
SEC-HPLC.**



**Immobilized Anti-
MSLN Antibody, hFc
Tag at 1 µg/mL (100
µL/Well) on the plate.
Dose response curve
for Biotinylated
Cynomolgus MSLN,**

 Tel: 1-631-559-9269 1-516-512-3133

 Email: info@creative-biomart.com  Fax: 1-631-938-8127

 45-1 Ramsey Road, Shirley, NY 11967, USA



His Tag with the
EC50 of 54.8 ng/mL
determined by
ELISA.

 Tel: 1-631-559-9269 1-516-512-3133

 Email: info@creative-biomart.com  Fax: 1-631-938-8127

 45-1 Ramsey Road, Shirley, NY 11967, USA