

Recombinant Human mesothelin Protein, Tag Free

Cat. No. MSLN-022H Lot. No. (See product label)

SPECIFICATION

Product Overview Recombinant human Mesothelin/MSLN (Q13421-3) (Leu550-Ser 598) G4S (Leu550-Ser 598) without tag was expressed in HEK293.

Species Human

Source HEK293

ProteinLength 550-598aa

Description

Mesothelin, also known as MSLN, is a protein that in humans is encoded by the MSLN gene. Mesothelin is a 40 kDa protein that is expressed in mesothelial cells. The protein was first identified by its reactivity with monoclonal antibody K1. Subsequent cloning studies showed that the mesothelin gene encodes a precursor protein that is processed to yield mesothelin which is attached to the cell membrane by a glycoposphatidylinositol linkage and a 31-kDa shed fragment named megakaryocyte-potentiating factor (MPF). Although it has been proposed that mesothelin may be involved in cell adhesion, its biological function is not known. A knockout mouse line that lacks mesothelin reproduces and develops normally. Mesothelin is over expressed in several human tumors, including mesothelioma, ovarian cancer, pancreatic adenocarcinoma, lung adenocarcinoma, and cholangiocarcinoma. Mesothelin binds MUC16 (also known as CA125), indicating that the interaction of mesothelin and MUC16 may contribute to the implantation and peritoneal spread of tumors by cell adhesion. The region (residues 296-359) consisting of 64 amino acids at the N-terminus of cell surface mesothelin has been

 Tel: 1-631-559-9269 1-516-512-3133

 Email: info@creative-biomart.com  Fax: 1-631-938-8127

 45-1 Ramsey Road, Shirley, NY 11967, USA

identified as the functional binding domain (named IAB) for MUC16/CA125, suggesting the mechanism of mesothelin acting as a MUC16/CA125 functional partner in cancer development.

Tag	Non
Molecular Mass	11.8 kDa
Endotoxin	Less than 1.0 EU/μg by the LAL method.
Purity	>95% as determined by SDS-PAGE.
Storage	Please avoid repeated freeze-thaw cycles. Samples are stable for up to twelve months from date of receipt at -20 to -80 centigrade. It is recommended that aliquot the reconstituted solution to minimize freeze-thaw cycles.
Storage Buffer	Lyophilized from a 0.2 μm filtered solution of PBS, pH7.4, 5% Trehalose, 5% mannitol.
Reconstitution	Reconstitute at 250 μg/mL in sterile water.

GENE INFORMATION

Gene Name	MSLN mesothelin [Homo sapiens (human)]
Official Symbol	MSLN
Synonyms	MSLN; mesothelin; CAK1; MPF; CAK1 antigen; megakaryocyte potentiating factor; soluble MPF mesothelin related protein; pre-pro-megakaryocyte-potentiating factor; SMRP;

 Tel: 1-631-559-9269 1-516-512-3133

 Email: info@creative-biomart.com  Fax: 1-631-938-8127

 45-1 Ramsey Road, Shirley, NY 11967, USA

Gene ID 10232

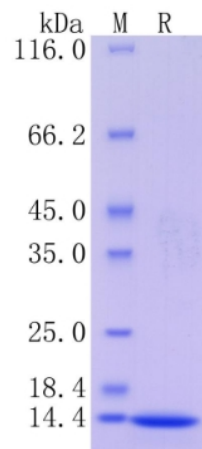
mRNA Refseq NM_001177355


Protein Refseq NP_001170826

MIM 601051

UniProt ID Q13421

Protein on SDS-PAGE under reducing (R) condition.



 Tel: 1-631-559-9269 1-516-512-3133

 Email: info@creative-biomart.com  Fax: 1-631-938-8127

 45-1 Ramsey Road, Shirley, NY 11967, USA