

Recombinant Human MSLN protein, His-tagged, Biotin Labeled.

Cat. No. MSLN-10623H **Lot. No.** (See product label)

SPECIFICATION

Product Overview

Recombinant Human MSLN(Glu 296 - Gly 580) fused with His tag at C-terminal was expressed in HEK293.

Species

Human

Source

HEK293

ProteinLength

Glu 296 - Gly 580

Description

Mesothelin (MSLN) is also known as CAK1 antigen, Pre-pro-megakaryocyte-potentiating factor, which belongs to the mesothelin family. Mesothelin / MSLN can be proteolytically cleaved into the following two chains by a furin-like convertase: Megakaryocyte-potentiating factor (MPF) and the cleaved form of mesothelin. Both MPF and the cleaved form of mesothelin are N-glycosylated. Mesothelin / MSLN can interact with MUC16. The membrane-anchored forms of MSLN may play a role in cellular adhesion. MPF potentiates megakaryocyte colony formation in vitro.

Predicted N Terminal

Glu 296

Form

Lyophilized from 0.22µm filtered solution in PBS (pH 7.4) with Trehalose as protectant.

Molecular Mass

The protein has a calculated MW of 33 kDa. The protein migrates as 38-42 kDa on a SDS-PAGE gel under reducing (R) condition due to glycosylation.

 Tel: 1-631-559-9269 1-516-512-3133

 Email: info@creative-biomart.com  Fax: 1-631-938-8127

 45-1 Ramsey Road, Shirley, NY 11967, USA

Endotoxin	Less than 1.0 EU per µg by the LAL method.
Purity	>95% as determined by SDS-PAGE.
Notes	The primary amines in the side chains of lysine residues and the N-terminus of the protein are conjugated with biotins using standard chemical labeling method. A standard biotin reagent (13.5 angstroms) is used in this product.
Storage	For long term storage, the product should be stored at lyophilized state at -20 centigrade or lower. Please avoid repeated freeze-thaw cycles. No activity loss is observed after storage at: 4-8 centigrade for 12 months in lyophilized state; -70 centigrade for 3 months under sterile conditions after reconstitution.
Reconstitution	Reconstitute at 100 µg/mL in sterile deionized water. For best performance, we strongly recommend you to follow the reconstitution protocol provided in the COA.
Conjugation	Biotin

GENE INFORMATION

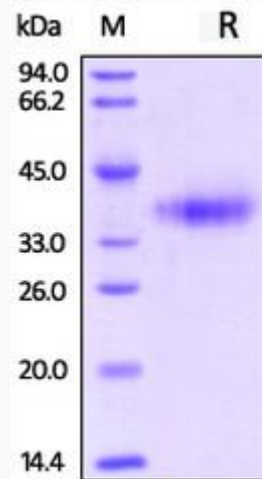
Gene Name	MSLN mesothelin [Homo sapiens]
Official Symbol	MSLN
Synonyms	MSLN; mesothelin; CAK1; MPF; CAK1 antigen; megakaryocyte potentiating factor; soluble MPF mesothelin related protein; pre-pro-megakaryocyte-potentiating factor; SMRP;
Gene ID	10232

 Tel: 1-631-559-9269 1-516-512-3133

 Email: info@creative-biomart.com  Fax: 1-631-938-8127

 45-1 Ramsey Road, Shirley, NY 11967, USA

mRNA Refseq	NM_001177355
Protein Refseq	NP_001170826
MIM	601051
UniProt ID	Q13421
Chromosome Location	16p13.3



 Tel: 1-631-559-9269 1-516-512-3133

 Email: info@creative-biomart.com  Fax: 1-631-938-8127

 45-1 Ramsey Road, Shirley, NY 11967, USA