

# Active Recombinant Human MSLN Protein, His-tagged, Alexa Fluor® 488 conjugated

Cat. No. MSLN-15H Lot. No. (See product label)

## SPECIFICATION

<b>Product Overview</b>	Recombinant human Alexa Fluor® 488 conjugated Mesothelin (Glu296-Gly580) with a His tag at C-Terminal was expressed in mouse myeloma cell line.
<b>Species</b>	Human
<b>Source</b>	NS0
<b>ProteinLength</b>	296-580 a.a.
<b>Description</b>	This gene encodes a preproprotein that is proteolytically processed to generate two protein products, megakaryocyte potentiating factor and mesothelin. Megakaryocyte potentiating factor functions as a cytokine that can stimulate colony formation of bone marrow megakaryocytes. Mesothelin is a glycosylphosphatidylinositol-anchored cell-surface protein that may function as a cell adhesion protein. This protein is overexpressed in epithelial mesotheliomas, ovarian cancers and in specific squamous cell carcinomas. Alternative splicing results in multiple transcript variants, at least one of which encodes an isoform that is proteolytically processed.
<b>Form</b>	Labeled with Alexa Fluor® 488 via amines Excitation Wavelength: 488 nm Emission Wavelength: 515-545 nm
<b>Bio-activity</b>	Measured by flow cytometry for its ability to bind anti-human Mesothelin Monoclonal Antibody conjugated beads. The concentration of Recombinant Human Mesothelin C-

 Tel: 1-631-559-9269 1-516-512-3133

 Email: [info@creative-biomart.com](mailto:info@creative-biomart.com)  Fax: 1-631-938-8127

 45-1 Ramsey Road, Shirley, NY 11967, USA

	Terminal (aa 296-580) His-tag Alexa Fluor® 488 that produces 50% of the binding response is 25.0-250 ng/mL.
<b>Molecular Mass</b>	33 kDa
<b>N-terminal Sequence Analysis</b>	Glu296
<b>Endotoxin</b>	<1.0 EU/µg of the protein by the LAL method.
<b>Purity</b>	>95%, by SDS-PAGE visualized with Silver Staining and quantitative densitometry by Coomassie® Blue Staining.
<b>Storage</b>	Protect from light. Use a manual defrost freezer and avoid repeated freeze-thaw cycles. 6 months from date of receipt, -20 to -70 centigrade as supplied. 1 month, 2 to 8 centigrade under sterile conditions after opening. 3 months, -20 to -70 centigrade under sterile conditions after opening.
<b>Storage Buffer</b>	Supplied as a 0.2 µm filtered solution in PBS with BSA as a carrier protein.
<b>Shipping</b>	The product is shipped with dry ice or equivalent.
<b>Conjugation</b>	Alexa Fluor 488

## GENE INFORMATION

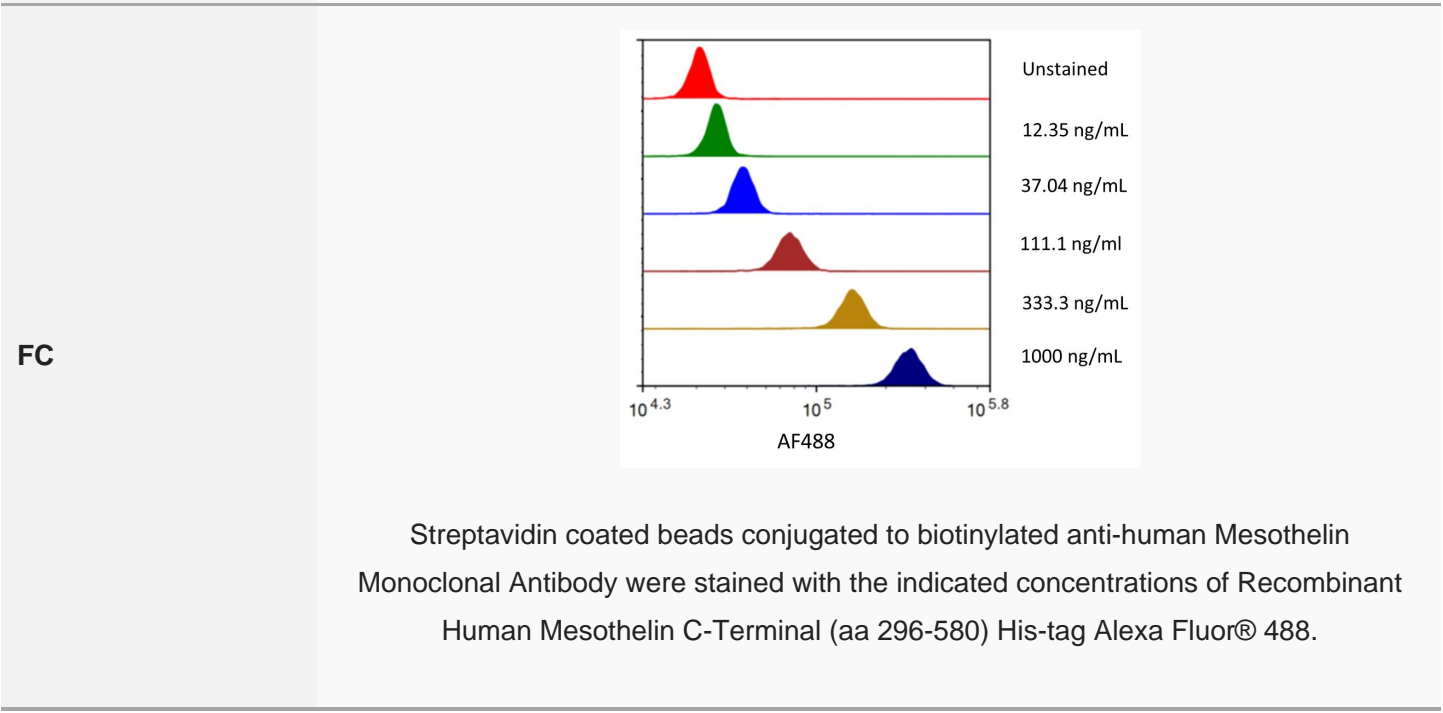
<b>Gene Name</b>	MSLN mesothelin [ Homo sapiens (human) ]
<b>Official Symbol</b>	MSLN

 Tel: 1-631-559-9269 1-516-512-3133

 Email: [info@creative-biomart.com](mailto:info@creative-biomart.com)  Fax: 1-631-938-8127

 45-1 Ramsey Road, Shirley, NY 11967, USA

<b>Synonyms</b>	MSLN; mesothelin; MPF; SMRP; mesothelin; CAK1 antigen; megakaryocyte potentiating factor; pre-pro-megakaryocyte-potentiating factor; soluble MPF mesothelin related protein
<b>Gene ID</b>	10232
<b>mRNA Refseq</b>	BC009272
<b>Protein Refseq</b>	AAH09272
<b>MIM</b>	601051
<b>UniProt ID</b>	Q13421



Tel: 1-631-559-9269 1-516-512-3133

Email: [info@creative-biomart.com](mailto:info@creative-biomart.com) Fax: 1-631-938-8127

45-1 Ramsey Road, Shirley, NY 11967, USA