

Active Recombinant Human MSLN Protein, His-tagged, Alexa Fluor® 647 conjugated

Cat. No. MSLN-16H Lot. No. (See product label)

SPECIFICATION

Product Overview	Recombinant human Alexa Fluor® 647 conjugated Mesothelin (Glu296-Gly580) with a His tag at C-Terminal was expressed in mouse myeloma cell line.
Species	Human
Source	NS0
ProteinLength	296-580 a.a.
Description	This gene encodes a preproprotein that is proteolytically processed to generate two protein products, megakaryocyte potentiating factor and mesothelin. Megakaryocyte potentiating factor functions as a cytokine that can stimulate colony formation of bone marrow megakaryocytes. Mesothelin is a glycosylphosphatidylinositol-anchored cell-surface protein that may function as a cell adhesion protein. This protein is overexpressed in epithelial mesotheliomas, ovarian cancers and in specific squamous cell carcinomas. Alternative splicing results in multiple transcript variants, at least one of which encodes an isoform that is proteolytically processed.
Form	Labeled with Alexa Fluor® 647 via amine. Excitation Wavelength: 650 nm Emission Wavelength: 668 nm
Bio-activity	Measured by flow cytometry for its ability to bind anti-human Mesothelin Monoclonal Antibody conjugated beads. The concentration of Recombinant Human Mesothelin C-

 Tel: 1-631-559-9269 1-516-512-3133

 Email: info@creative-biomart.com  Fax: 1-631-938-8127

 45-1 Ramsey Road, Shirley, NY 11967, USA

	Terminal (aa 296-580) His-tag Alexa Fluor® 647 that produces 50% of the binding response is 1.00-20.0 ng/mL.
Molecular Mass	33 kDa
N-terminal Sequence Analysis	Glu296
Endotoxin	<1.0 EU/μg of the protein by the LAL method.
Purity	>95%, by SDS-PAGE visualized with Silver Staining and quantitative densitometry by Coomassie® Blue Staining.
Storage	Protect from light. Use a manual defrost freezer and avoid repeated freeze-thaw cycles. 6 months from date of receipt, -20 to -70 centigrade as supplied. 1 month, 2 to 8 centigrade under sterile conditions after opening. 3 months, -20 to -70 centigrade under sterile conditions after opening.
Storage Buffer	Supplied as a 0.2 μm filtered solution in PBS with BSA as a carrier protein.
Shipping	The product is shipped with dry ice or equivalent.
Conjugation	Alexa Fluor 647

GENE INFORMATION

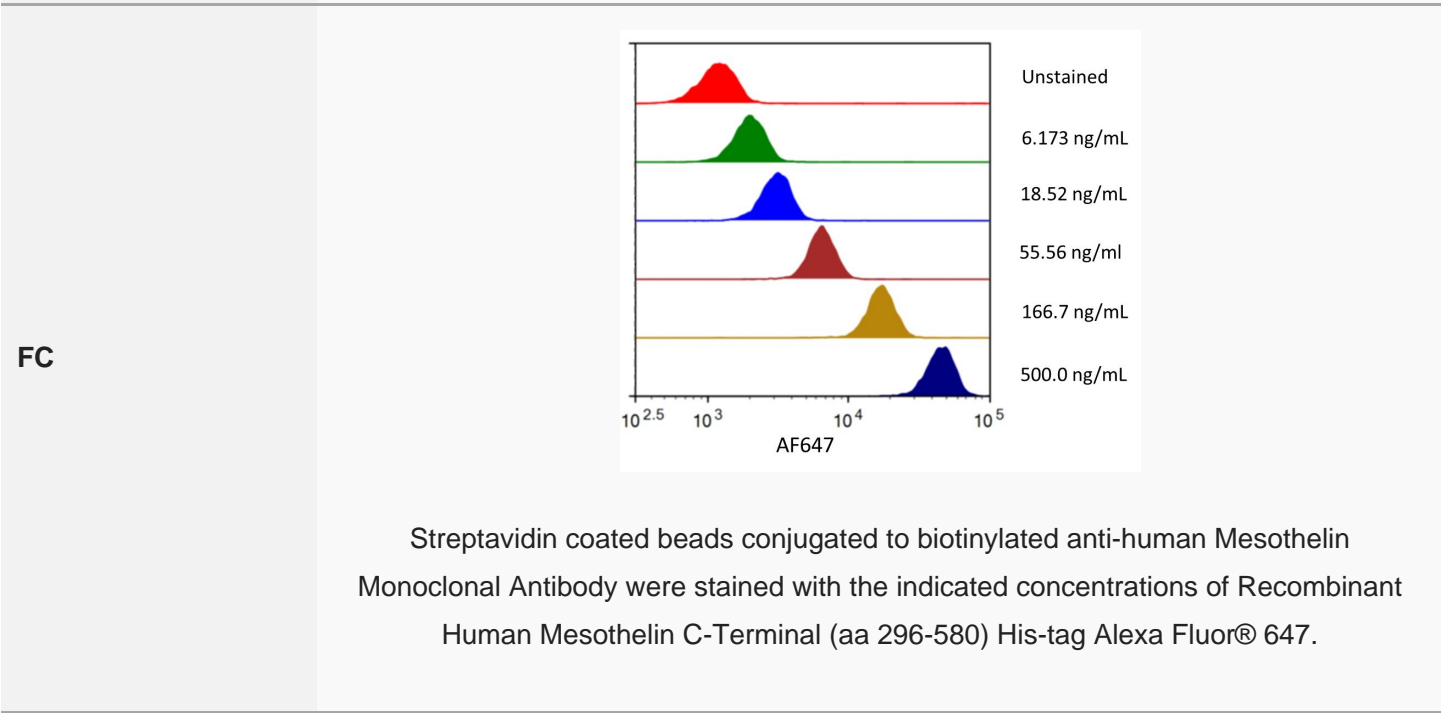
Gene Name	MSLN mesothelin [Homo sapiens (human)]
Official Symbol	MSLN

 Tel: 1-631-559-9269 1-516-512-3133

 Email: info@creative-biomart.com  Fax: 1-631-938-8127

 45-1 Ramsey Road, Shirley, NY 11967, USA

Synonyms	MSLN; mesothelin; MPF; SMRP; mesothelin; CAK1 antigen; megakaryocyte potentiating factor; pre-pro-megakaryocyte-potentiating factor; soluble MPF mesothelin related protein
Gene ID	10232
mRNA Refseq	BC009272
Protein Refseq	AAH09272
MIM	601051
UniProt ID	Q13421



Tel: 1-631-559-9269 1-516-512-3133

Email: info@creative-biomart.com Fax: 1-631-938-8127

45-1 Ramsey Road, Shirley, NY 11967, USA