

Recombinant Cynomolgus MSLN Protein, Fc tagged

Cat. No. MSLN-25C Lot. No. (See product label)

SPECIFICATION

Product Overview	Recombinant Cynomolgus MSLN Protein with Fc-tag was expressed in Human cells.
Species	Cynomolgus
Source	Human Cells
Description	<p>This gene encodes a preproprotein that is proteolytically processed to generate two protein products, megakaryocyte potentiating factor and mesothelin. Megakaryocyte potentiating factor functions as a cytokine that can stimulate colony formation of bone marrow megakaryocytes. Mesothelin is a glycosylphosphatidylinositol-anchored cell-surface protein that may function as a cell adhesion protein. This protein is overexpressed in epithelial mesotheliomas, ovarian cancers and in specific squamous cell carcinomas. Alternative splicing results in multiple transcript variants, at least one of which encodes an isoform that is proteolytically processed.</p>
AA Sequence	<p>DVERTTCPPEKEVHEIDESLIFYKKRELEACVDAALLAAQMDRVDAIPFTYEQLDVLK HKLDELYPQGYPESVIRHLGHLFLKMSPEDIRKWNVTSLETLKALLKVSKGHEMSAQ VATLIDRVVVGGRGQLDKDTADTLTAFCPGCLCSLSPERLSSVPPSIIGAVRPQDLDTG GPRQLDVLYPKARLAFQNMMSGSEYFVKIRPFLGGAPTEDLKALSQQNVSMDLATFM KLRREAVLPLSVAEVQKLLGPHVEGLKVVEEQHSPVRDWILKQRQDDLDTLGLGLQG GIPNGYLILDLSVREALSGTPCLLGGPG</p>
Endotoxin	< 1.0 EU/μg of the protein by the LAL method.
Purity	> 90% by SDS-PAGE

 Tel: 1-631-559-9269 1-516-512-3133

 Email: info@creative-biomart.com  Fax: 1-631-938-8127

 45-1 Ramsey Road, Shirley, NY 11967, USA

Storage	Store it under sterile conditions at -20 to -80 centigrade. It is recommended that the protein be aliquoted for optimal storage. Avoid repeated freeze-thaw cycles.
Concentration	1.0 mg/mL as determined by BCA method
Storage Buffer	Supplied as a 0.2 µm filtered solution in PBS (pH 7.4)

GENE INFORMATION

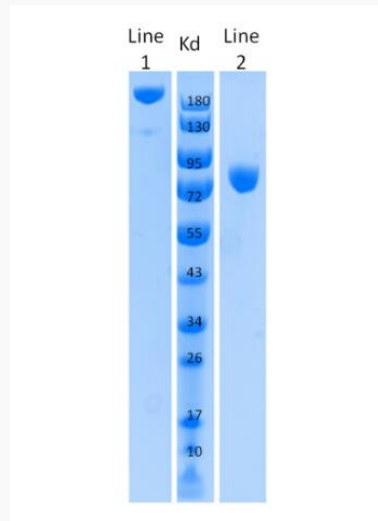
Gene Name	MSLN mesothelin [<i>Macaca fascicularis</i> (crab-eating macaque)]
Official Symbol	MSLN
Synonyms	MSLN; mesothelin
Gene ID	102130460
mRNA Refseq	XM_045382794
Protein Refseq	XP_045238729

 Tel: 1-631-559-9269 1-516-512-3133

 Email: info@creative-biomart.com  Fax: 1-631-938-8127

 45-1 Ramsey Road, Shirley, NY 11967, USA

**SDS-PAGE analysis
of purified
Cynomolgus Msln**



Line1: 1.5 µg/Line, Non-reduced

Line2: 1.5 µg/Line, Reduced

 Tel: 1-631-559-9269 1-516-512-3133

 Email: info@creative-biomart.com  Fax: 1-631-938-8127

 45-1 Ramsey Road, Shirley, NY 11967, USA