

Active Recombinant Human MSLN Protein (Glu 296 - Gly 580), His-tagged, FITC-Labeled

Cat. No. MSLN-315H Lot. No. (See product label)

SPECIFICATION

Product Overview

Recombinant Human MSLN Protein, His-tagged, FITC-Labeled is expressed from human HEK293 cells. It contains AA Glu 296 - Gly 580 (Accession # AAH09272). It is the FITC labeled form of Human Mesothelin (296-580). Predicted N-terminus: Glu 296. This protein carries a polyhistidine tag at the C-terminus. The protein has a calculated MW of 33.0 kDa. The protein migrates as 35-45 kDa under reducing (R) condition (SDS-PAGE) due to glycosylation. Conjugate (FITC): Excitation source: 488 nm spectral line, argon-ion laser; Excitation Wavelength: 488 nm; Emission Wavelength: 535 nm. The FITC to protein molar ratio is 0.5-1.5. The primary amines in the side chains of lysine residues and the N-terminus of the protein are conjugated with FITC using standard chemical labeling method. The residual FITC is removed by molecular seive treatment during purification process.

Species	Human
Source	HEK293
ProteinLength	Glu 296 - Gly 580
Form	Lyophilized from 0.22 µm filtered solution in PBS, pH7.4. Normally trehalose is added as protectant before lyophilization.
Bio-activity	Immobilized Anti-Human MSLN MAb at 10 µg/mL (100 µL/well) can bind Recombinant Human MSLN Protein, His-tagged, FITC-Labeled with a linear range of

 Tel: 1-631-559-9269 1-516-512-3133

 Email: info@creative-biomart.com  Fax: 1-631-938-8127

 45-1 Ramsey Road, Shirley, NY 11967, USA

	0.078-0.313 µg/mL (Ex.488 nm/Em.535 nm) (QC tested).
Molecular Mass	33.0 kDa
Endotoxin	Less than 1.0 EU per µg by the LAL method.
Purity	>90% as determined by SDS-PAGE.
Notes	Please avoid repeated freeze-thaw cycles.
Stability	No activity loss is observed after storage at: 4-8 centigrade for 12 months in lyophilized state; -70 centigrade for 3 months under sterile conditions after reconstitution.
Storage	For long term storage, the product should be stored at lyophilized state at -20 centigrade or lower.
Reconstitution	It is recommended that sterile water be added to the vial to prepare a stock solution of 0.2 mg/ml. Centrifuge the vial at 4 centigrade before opening to recover the entire contents.
Conjugation	FITC

GENE INFORMATION

Gene Name	MSLN mesothelin [Homo sapiens]
Official Symbol	MSLN
Synonyms	MSLN; mesothelin; CAK1; MPF; CAK1 antigen; megakaryocyte potentiating factor; SMRP;

 Tel: 1-631-559-9269 1-516-512-3133

 Email: info@creative-biomart.com  Fax: 1-631-938-8127

 45-1 Ramsey Road, Shirley, NY 11967, USA

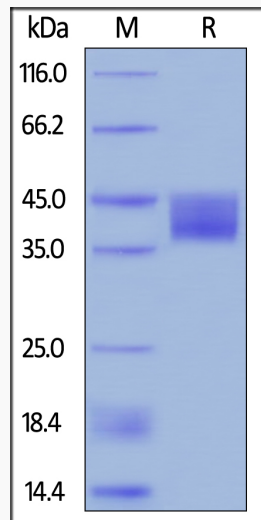
Gene ID 10232

mRNA Refseq NM_001177355

Protein Refseq NP_001170826

MIM 601051

UniProt ID Q13421



Tel: 1-631-559-9269 1-516-512-3133

Email: info@creative-biomart.com Fax: 1-631-938-8127

45-1 Ramsey Road, Shirley, NY 11967, USA