

Active Recombinant Human MSLN Protein (Glu 296 - Gly 580), His-tagged, GFP Fusion

Cat. No. MSLN-317H Lot. No. (See product label)

SPECIFICATION

Product Overview	Recombinant Human MSLN Protein, His-tagged, GFP Fusion is expressed from human 293 cells (HEK293). It contains AA Glu 296 - Gly 580 (Accession # AAH09272.1). Predicted N-terminus: Ala 2. This protein carries a GFP tag at the N-terminus and a polyhistidine tag at the C-terminus. The protein has a calculated MW of 60.4 kDa. The protein migrates as 70 kDa under reducing (R) condition (SDS-PAGE) due to glycosylation. Conjugate (GFP): Excitation source: 488 nm spectral line, argon-ion laser; Excitation Wavelength: 488 nm; Emission Wavelength: 530 nm.
Species	Human
Source	HEK293
ProteinLength	Glu 296 - Gly 580
Form	Lyophilized from 0.22 µm filtered solution in PBS, pH7.4. Normally trehalose is added as protectant before lyophilization.
Bio-activity	<p>Immobilized Anti-Human MSLN MAb at 10 µg/mL (100 µL/well) can bind Recombinant Human MSLN Protein, His-tagged, GFP Fusion with a linear range of 0.039-0.625 µg/mL (QC tested).</p> <p>Anti-human MSLN MAb (chimeric mouse-human IgG1) captured on CM5 chip via Anti-human IgG Fc antibodies surface, can bind Recombinant Human MSLN Protein, His-tagged, GFP Fusion with an affinity constant of 0.542 nM as determined in a SPR</p>

 Tel: 1-631-559-9269 1-516-512-3133

 Email: info@creative-biomart.com  Fax: 1-631-938-8127

 45-1 Ramsey Road, Shirley, NY 11967, USA

assay (Biacore T200) (Routinely tested).

2e5 of the MSLN-CAR-293 cells were stained with 100ul of 3 µg/mL of Recombinant Human MSLN Protein, His-tagged, GFP Fusion. GFP was used as negative control (Routinely tested).

Molecular Mass 60.4 kDa

Endotoxin Less than 1.0 EU per µg by the LAL method.

Purity >90% as determined by SDS-PAGE.

Applications Flow cytometry (E.g. Evaluation of anti-MSLN CAR expression), fluorescence microscopy, etc.

Notes Please avoid repeated freeze-thaw cycles.

Stability No activity loss is observed after storage at:
4-8 centigrade for 12 months in lyophilized state;
-70 centigrade for 3 months under sterile conditions after reconstitution.

Storage For long term storage, the product should be stored at lyophilized state at -20 centigrade or lower.

Reconstitution It is recommended that sterile water be added to the vial to prepare a stock solution of 0.2 mg/ml. Centrifuge the vial at 4 centigrade before opening to recover the entire contents.

GENE INFORMATION

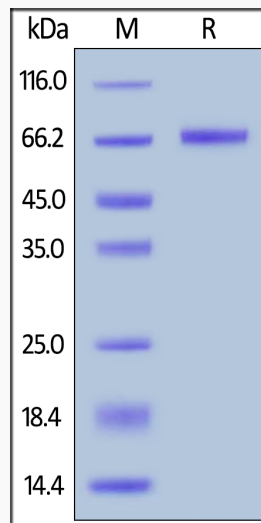
Gene Name [MSLN mesothelin \[Homo sapiens \]](#)

 Tel: 1-631-559-9269 1-516-512-3133

 Email: info@creative-biomart.com  Fax: 1-631-938-8127

 45-1 Ramsey Road, Shirley, NY 11967, USA

Official Symbol	MSLN
Synonyms	MSLN; mesothelin; CAK1; MPF; CAK1 antigen; megakaryocyte potentiating factor; SMRP;
Gene ID	10232
mRNA Refseq	NM_001177355
Protein Refseq	NP_001170826
MIM	601051
UniProt ID	Q13421



Tel: 1-631-559-9269 1-516-512-3133

Email: info@creative-biomart.com Fax: 1-631-938-8127

45-1 Ramsey Road, Shirley, NY 11967, USA