

Recombinant Human MSLN Protein (Glu 296 - Gly 580), His-tagged, PE-Labeled

Cat. No. MSLN-318H Lot. No. (See product label)

SPECIFICATION

Product Overview Recombinant Human MSLN Protein, His-tagged, PE-Labeled is produced via conjugation of PE to Human Mesothelin (296-580) under optimal conditions. Human Mesothelin (296-580) is expressed in HEK293 cells containing AA Glu 296 - Gly 580 (Accession # AAH09272). Predicted N-terminus: Glu 296. This protein carries a polyhistidine tag at the C-terminus. The protein has a calculated MW of 33.0 kDa. Conjugate (PE): Excitation source: 488 nm spectral line, argon-ion laser; Excitation Wavelength: 488 nm; Emission Wavelength: 575 nm.

Species Human

Source HEK293

ProteinLength Glu 296 - Gly 580

Form Lyophilized from 0.22 μ m filtered solution in 10 mM Tris, 150 mM NaCl, 0.1% BSA, pH8.2. Normally trehalose is added as protectant before lyophilization.

Molecular Mass 33.0 kDa

Endotoxin Less than 1.0 EU per μ g by the LAL method.

Notes Please avoid repeated freeze-thaw cycles.

Stability No activity loss is observed after storage at:

 Tel: 1-631-559-9269 1-516-512-3133

 Email: info@creative-biomart.com  Fax: 1-631-938-8127

 45-1 Ramsey Road, Shirley, NY 11967, USA

4-8 centigrade for 12 months in lyophilized state;
 -70 centigrade for 3 months under sterile conditions after reconstitution.

Storage

For long term storage, the product should be stored at lyophilized state at -20 centigrade or lower.

Reconstitution

It is recommended that sterile water be added to the vial to prepare a stock solution of 0.2 mg/ml. Centrifuge the vial at 4 centigrade before opening to recover the entire contents.

GENE INFORMATION

Gene Name

[MSLN mesothelin \[Homo sapiens \]](#)

Official Symbol

[MSLN](#)

Synonyms

MSLN; mesothelin; CAK1; MPF; CAK1 antigen; megakaryocyte potentiating factor; SMRP;

Gene ID

[10232](#)

mRNA Refseq

[NM_001177355](#)

Protein Refseq

[NP_001170826](#)

MIM

[601051](#)

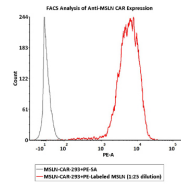
UniProt ID

[Q13421](#)

 Tel: 1-631-559-9269 1-516-512-3133

 Email: info@creative-biomart.com  Fax: 1-631-938-8127

 45-1 Ramsey Road, Shirley, NY 11967, USA



Tel: 1-631-559-9269 1-516-512-3133

Email: info@creative-biomart.com Fax: 1-631-938-8127

45-1 Ramsey Road, Shirley, NY 11967, USA