

## Recombinant Human MSLN Protein, Fc-tagged

Cat. No. MSLN-32H Lot. No. (See product label)

### SPECIFICATION

<b>Product Overview</b>	Recombinant Human MSLN Protein(AAH09272.1)(Glu296-Ser598), fused with Fc tag at the C-terminus, was expressed in HEK293.
<b>Species</b>	Human
<b>Source</b>	HEK293
<b>ProteinLength</b>	Glu296-Ser598
<b>Form</b>	Lyophilized from a 0.2 µm filtered solution of PBS, pH 7.4.
<b>Molecular Mass</b>	70-90 Kda
<b>Endotoxin</b>	Less than 0.1 ng/g (1 EU/g) as determined by LAL test.
<b>Purity</b>	Greater than 95% as determined by reducing SDS-PAGE.
<b>Storage</b>	Lyophilized protein should be stored at ≤ -20°C, stable for one year after receipt. Reconstituted protein solution can be stored at 2-8°C for 2-7 days. Aliquots of reconstituted samples are stable at ≤ -20°C for 3 months.
<b>Reconstitution</b>	Always centrifuge tubes before opening.Do not mix by vortex or pipetting. It is not recommended to reconstitute to a concentration less than 100µg/ml. Dissolve the lyophilized protein in distilled water. Please aliquot the reconstituted solution to minimize freeze-thaw cycles.

 Tel: 1-631-559-9269 1-516-512-3133

 Email: [info@creative-biomart.com](mailto:info@creative-biomart.com)  Fax: 1-631-938-8127

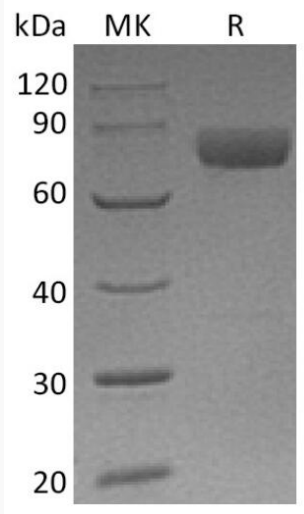
 45-1 Ramsey Road, Shirley, NY 11967, USA

**GENE INFORMATION**

<b>Gene Name</b>	MSLN mesothelin [ Homo sapiens ]
<b>Official Symbol</b>	MSLN
<b>Synonyms</b>	MSLN; mesothelin; CAK1; MPF; CAK1 antigen; megakaryocyte potentiating factor; soluble MPF mesothelin related protein; pre-pro-megakaryocyte-potentiating factor; SMRP
<b>Gene ID</b>	10232
<b>mRNA Refseq</b>	NM_001177355
<b>Protein Refseq</b>	NP_001170826
<b>MIM</b>	601051
<b>UniProt ID</b>	Q13421

 Tel: 1-631-559-9269 1-516-512-3133 Email: [info@creative-biomart.com](mailto:info@creative-biomart.com)  Fax: 1-631-938-8127 45-1 Ramsey Road, Shirley, NY 11967, USA

**SDS-PAGE**



 Tel: 1-631-559-9269 1-516-512-3133

 Email: [info@creative-biomart.com](mailto:info@creative-biomart.com)  Fax: 1-631-938-8127

 45-1 Ramsey Road, Shirley, NY 11967, USA