

Recombinant Human MSLN Protein (Glu296-Ser598), N-His tagged

Cat. No. MSLN-3880H **Lot. No.** (See product label)

SPECIFICATION

Product Overview	Recombinant human MSLN (Glu296-Ser598) fused with the N-His tag was expressed in E. coli.
Species	Human
Source	E.coli
ProteinLength	Glu296-Ser598
Form	Lyophilized powder/frozen liquid
Molecular Mass	36.45 kDa
Purity	>90% as determined by SDS-PAGE.
Notes	For research use only.
Storage	Use a manual defrost freezer and avoid repeated freeze thaw cycles. Store at 2 to 8 centigrade for one week. Store at -20 to -80 centigrade for twelve months from the date of receipt.
Storage Buffer	0.01M PBS, pH 7.4, 0.02% NLS
Reconstitution	Reconstitute in sterile water for a stock solution.

 Tel: 1-631-559-9269 1-516-512-3133

 Email: info@creative-biomart.com  Fax: 1-631-938-8127

 45-1 Ramsey Road, Shirley, NY 11967, USA

Shipping

They are shipped out with dry ice/blue ice unless customers require otherwise.

GENE INFORMATION
Gene Name

MSLN mesothelin [Homo sapiens (human)]

Official Symbol

MSLN

Synonyms

MSLN; mesothelin; CAK1; MPF; CAK1 antigen; megakaryocyte potentiating factor; soluble MPF mesothelin related protein; pre-pro-megakaryocyte-potentiating factor; SMRP;

Gene ID

10232

mRNA Refseq

NM_001177355

Protein Refseq

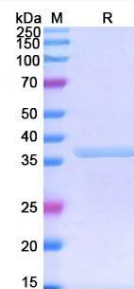
NP_001170826

MIM

601051


UniProt ID

Q13421

SDS-PAGE


 Tel: 1-631-559-9269 1-516-512-3133

 Email: info@creative-biomart.com  Fax: 1-631-938-8127

 45-1 Ramsey Road, Shirley, NY 11967, USA