

Recombinant Human MSLN Protein, GST-tagged

Cat. No. MSLN-5659H Lot. No. (See product label)

SPECIFICATION

Product Overview	Human MSLN full-length ORF (AAH03512.1, 1 a.a. - 621 a.a.) recombinant protein with GST-tag at N-terminal.
Species	Human
Source	Wheat Germ
Description	An antibody that reacts with ovarian cancers and mesotheliomas was used to isolate a cell surface antigen named mesothelin. Although the function of mesothelin is unknown, it may play a role in cellular adhesion and is present on mesothelium, mesotheliomas, and ovarian cancers. This gene encodes a preproprotein that is cleaved into two products, megakaryocyte potentiating factor and mesothelin. Alternative splicing results in multiple transcript variants. [provided by RefSeq]
Molecular Mass	94.3 kDa
AA Sequence	MALPTARPLLGSCGTPALGSLFLLFSLGWVQPSRTLGETGQAAPLDGVLANPPNI SSLSRQLLGFPCEVSGLSTERVRELAVALAQKNVCLSTEQLRCLAHRLSEPPEDL DALPLDLLLFLNPDAFSGPQACTRFFSRITKANVDLLPRGAPERQRLLPAALACWGV RGSLLSEADVRLGGLACDLPGRFVAESAEVLLPRLVSCPGPLDQDQQAARAALQ GGPPYPGPSTWSVSTMDALRGLLPVLGQPIIRSIPQGIVAAWRQRSSRDPSWRQP ERTILRPRFRREVEKTACPSGKKAREIDESLIFYKKWELEACVDAALLATQMDRVNAI PFTYEQLDVLKHKLDELYPQGYPESVIQHLGYLFLKMSPEDIRKWNVTSLETALKALLE VNKGHEMSPQVATLIDRFVKGRGQLDKDTLDTLTAFYPGYLCSLSPEELSSVPPSSI

 Tel: 1-631-559-9269 1-516-512-3133

 Email: info@creative-biomart.com  Fax: 1-631-938-8127

 45-1 Ramsey Road, Shirley, NY 11967, USA

WAVRPQDLDTCDPRQLDVLYPKARLAFQNMNGSEYFVKIQSFLGGAPTEDLKALSQ
 QNVSMDLATFMKLRRTDAVLPLTVAEVQKLLGPHVEGLKAEERHRPVRDWILRQRQD
 DLDTLGLGLQGGIPNGYLVLDLSVQEALSGTPCLLGGPGVLTVLALLLASTLA

Applications	Enzyme-linked Immunoabsorbent Assay Western Blot (Recombinant protein) Antibody Production Protein Array
Notes	Best use within three months from the date of receipt of this protein.
Storage	Store at -80 centigrade. Aliquot to avoid repeated freezing and thawing.
Storage Buffer	50 mM Tris-HCl, 10 mM reduced Glutathione, pH=8.0 in the elution buffer.

GENE INFORMATION

Gene Name	MSLN mesothelin [Homo sapiens]
Official Symbol	MSLN
Synonyms	MSLN; mesothelin; CAK1; MPF; CAK1 antigen; megakaryocyte potentiating factor; soluble MPF mesothelin related protein; pre-pro-megakaryocyte-potentiating factor; SMRP;
Gene ID	10232
mRNA Refseq	NM_001177355
Protein Refseq	NP_001170826

 Tel: 1-631-559-9269 1-516-512-3133

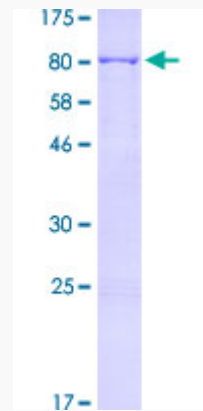
 Email: info@creative-biomart.com  Fax: 1-631-938-8127

 45-1 Ramsey Road, Shirley, NY 11967, USA

MIM 601051

UniProt ID Q13421

**Quality Control
Testing:**



12.5% SDS-PAGE Stained with Coomassie Blue.

 Tel: 1-631-559-9269 1-516-512-3133

 Email: info@creative-biomart.com  Fax: 1-631-938-8127

 45-1 Ramsey Road, Shirley, NY 11967, USA