

## Recombinant Human MSLN Protein (Glu296-Gly580), C-mFc and 6xHis-tagged

Cat. No. MSLN-651H Lot. No. (See product label)

### SPECIFICATION

#### Product Overview

Recombinant Human MSLN Protein (Glu296-Gly580) with C-mFc and 6xHis tag was expressed in HEK293.

#### Species

Human

#### Source

HEK293

#### ProteinLength

Glu296-Gly580

#### Description

This gene encodes a preproprotein that is proteolytically processed to generate two protein products, megakaryocyte potentiating factor and mesothelin. Megakaryocyte potentiating factor functions as a cytokine that can stimulate colony formation of bone marrow megakaryocytes. Mesothelin is a glycosylphosphatidylinositol-anchored cell-surface protein that may function as a cell adhesion protein. This protein is overexpressed in epithelial mesotheliomas, ovarian cancers and in specific squamous cell carcinomas. Alternative splicing results in multiple transcript variants, at least one of which encodes an isoform that is proteolytically processed.

#### Form

Lyophilized

#### Molecular Mass

59.3 kDa

#### Purity

> 95% as determined by SDS-PAGE and Coomassie blue staining.

 Tel: 1-631-559-9269 1-516-512-3133

 Email: [info@creative-biomart.com](mailto:info@creative-biomart.com)  Fax: 1-631-938-8127

 45-1 Ramsey Road, Shirley, NY 11967, USA

<b>Storage</b>	Store at -80 centigrade for 12 months (Avoid repeated freezing and thawing)
<b>Storage Buffer</b>	Lyophilized from sterile PBS, pH 7.4. Normally 5 % - 38 % trehalose is added as protectants before lyophilization.
<b>GENE INFORMATION</b>	
<b>Gene Name</b>	MSLN mesothelin [ Homo sapiens (human) ]
<b>Official Symbol</b>	MSLN
<b>Synonyms</b>	MSLN; mesothelin; CAK1; MPF; CAK1 antigen; megakaryocyte potentiating factor; soluble MPF mesothelin related protein; pre-pro-megakaryocyte-potentiating factor; SMRP;
<b>Gene ID</b>	10232
<b>mRNA Refseq</b>	NM_001177355
<b>Protein Refseq</b>	NP_001170826
<b>MIM</b>	601051
<b>UniProt ID</b>	Q13421

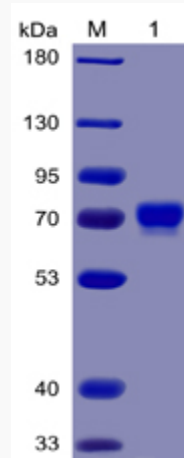
 Tel: 1-631-559-9269 1-516-512-3133

 Email: [info@creative-biomart.com](mailto:info@creative-biomart.com)  Fax: 1-631-938-8127

 45-1 Ramsey Road, Shirley, NY 11967, USA



SDS-PAGE



Tel: 1-631-559-9269 1-516-512-3133

Email: [info@creative-biomart.com](mailto:info@creative-biomart.com) Fax: 1-631-938-8127

45-1 Ramsey Road, Shirley, NY 11967, USA