

Recombinant Human MSLN Protein, hFc-tagged

Cat. No. MSLN-75H Lot. No. (See product label)

SPECIFICATION

Product Overview	Recombinant Human MSLN Protein, fused to hFc-tag, was expressed in HEK293.
Species	Human
Source	HEK293
Description	This gene encodes a preproprotein that is proteolytically processed to generate two protein products, megakaryocyte potentiating factor and mesothelin. Megakaryocyte potentiating factor functions as a cytokine that can stimulate colony formation of bone marrow megakaryocytes. Mesothelin is a glycosylphosphatidylinositol-anchored cell-surface protein that may function as a cell adhesion protein. This protein is overexpressed in epithelial mesotheliomas, ovarian cancers and in specific squamous cell carcinomas. Alternative splicing results in multiple transcript variants, at least one of which encodes an isoform that is proteolytically processed.
Form	Supplied as a 0.2 µm filtered solution in PBS , pH7.4.
Molecular Mass	61.96 kDa
AA Sequence	MHSSALLCCLVLLTGVR AEVEKTACPSGKKAREIDESLIFYKKWELEACVDAALLATQ MDRVNAIPFTYEQLDVLKHKLDELYPQGY PESVIQHLGYLFLKMSPEDIRKWNVTSL ETLKALLEVNKGHEMSPQVATLIDRFVKGRGQLDKDTLDTLTA FYPGYLCSLSPEEL SSVPPSSIWAVRPQDLDTCDPRQLDVLYPKARLAFQNMNGSEYFVKIQSFLGGAPT EDLKALSQQNVSMDLATFMKLRTDAVLPLTVAEVQKLLGPHVEGLKAEERHRPVRD WILRQRQDDLDTLGLGLQG GIPNGYLVLDLSTTENLYFQGSGTHTCP PCAPELLG

Tel: 1-631-559-9269 1-516-512-3133

Email: info@creative-biomart.com Fax: 1-631-938-8127

45-1 Ramsey Road, Shirley, NY 11967, USA



GPSVFLFPPKPKDTLMISRTPEVTCVVVDVSHEDPEVKFNWYVDGVEVHNAKTKPR
EEQYNSTYRVVSVLTVLHQDWLNGKEYKCKVSNKALPAPIEKTISKAKGQPREPQVY
TLPPSREEMTKNQVSLTCLVKGFYPSDIAVEWESNGQPENNYKTTPVLDSDGSFF
LYSKLTVDKSRWQQGNVFSCSVMHEALHNHYTQKSLSLSPGK

Purity >90%

Storage Store it under sterile conditions at -20 to -80 centigrade. It is recommended that the protein be aliquoted for optimal storage. Avoid repeated freeze-thaw cycles.

Concentration 0.86 mg/ml

GENE INFORMATION

Gene Name [MSLN mesothelin \[Homo sapiens \(human\) \]](#)

Official Symbol [MSLN](#)

Synonyms MPF; SMRP

Gene ID [10232](#)

mRNA Refseq [NM_005823](#)

Protein Refseq [NP_005814](#)

MIM [601051](#)

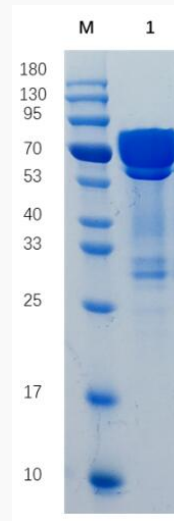
UniProt ID [Q13421](#)

Tel: 1-631-559-9269 1-516-512-3133

Email: info@creative-biomart.com Fax: 1-631-938-8127

45-1 Ramsey Road, Shirley, NY 11967, USA

SDS-PAGE



Reducing 12% SDS-PAGE analysis profile of purified MSLN-hFc (CBB stained).

 Tel: 1-631-559-9269 1-516-512-3133

 Email: info@creative-biomart.com  Fax: 1-631-938-8127

 45-1 Ramsey Road, Shirley, NY 11967, USA