

Recombinant Human MSLN Protein, His-tagged

Cat. No. MSLN-76H Lot. No. (See product label)

SPECIFICATION

Product Overview Recombinant Human MSLN Protein, fused to His-tag, was expressed in HEK293.

Species Human

Source HEK293

Description This gene encodes a preproprotein that is proteolytically processed to generate two protein products, megakaryocyte potentiating factor and mesothelin. Megakaryocyte potentiating factor functions as a cytokine that can stimulate colony formation of bone marrow megakaryocytes. Mesothelin is a glycosylphosphatidylinositol-anchored cell-surface protein that may function as a cell adhesion protein. This protein is overexpressed in epithelial mesotheliomas, ovarian cancers and in specific squamous cell carcinomas. Alternative splicing results in multiple transcript variants, at least one of which encodes an isoform that is proteolytically processed.

Form Supplied as a 0.2 µm filtered solution in PBS , pH7.4.

Molecular Mass 37.74 kDa

AA Sequence

```
MHSSALLCCLVLLTGVRAEVEKTACPSGKKAREIDESLIFYKKWELEACVDAALLATQ
MDRVNAIPFTYEQLDVLKHKLDELYPQGYPESVIQHLGYLFLKMSPEDIRKWNVTSL
ETLKALLEVNKGHEMSPQVATLIDRFVKGRGQLDKDTLDTLTAFYPGYLCSLSPEEL
SSVPPSSIWAVRPQDLDTCDPRQLDVLYPKARLAFQNMNGSEYFVKIQSFLGGAPT
EDLKALSQQNVSMDLATFMKLRTDAVLPLTVAEVQKLLGPHVEGLKAEERHRPVRD
WILRQRQDDLDTLGLGLQGIPNGYLVLDLSTTENLYFQGSTGHHHHHHHHH
```

 Tel: 1-631-559-9269 1-516-512-3133

 Email: info@creative-biomart.com  Fax: 1-631-938-8127

 45-1 Ramsey Road, Shirley, NY 11967, USA

| | |
|----------------------|---|
| Purity | >90% |
| Storage | Store it under sterile conditions at -20 to -80 centigrade. It is recommended that the protein be aliquoted for optimal storage. Avoid repeated freeze-thaw cycles. |
| Concentration | 0.54 mg/ml |

GENE INFORMATION

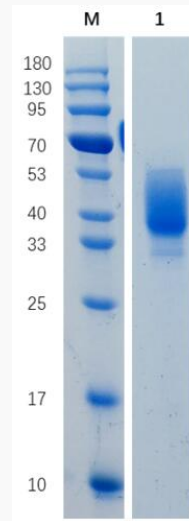
| | |
|------------------------|--|
| Gene Name | MSLN mesothelin [Homo sapiens (human)] |
| Official Symbol | MSLN |
| Synonyms | MPF; SMRP |
| Gene ID | 10232 |
| mRNA Refseq | NM_005823 |
| Protein Refseq | NP_005814 |
| MIM | 601051 |
| UniProt ID | Q13421 |

 Tel: 1-631-559-9269 1-516-512-3133

 Email: info@creative-biomart.com  Fax: 1-631-938-8127

 45-1 Ramsey Road, Shirley, NY 11967, USA

SDS-PAGE



Reducing 12% SDS-PAGE analysis profile of purified MSLN-his (CBB stained).

 Tel: 1-631-559-9269 1-516-512-3133

 Email: info@creative-biomart.com  Fax: 1-631-938-8127

 45-1 Ramsey Road, Shirley, NY 11967, USA