

Recombinant Human MSLN protein, His-Avi-tagged

Cat. No. MSLN-7818H Lot. No. (See product label)

SPECIFICATION

| | |
|-------------------------|---------------------------------------------------------------------------------------------------------------------------------------------------------------|
| Product Overview | Recombinant Human MSLN protein(Q13421-2)(Glu296-Gly580), fused with C-terminal His and Avi tag, was expressed in HEK293. |
| Species | Human |
| Source | HEK293 |
| ProteinLength | Glu296-Gly580 |
| Tag | C-His-Avi |
| Form | Lyophilized from 0.22µm filtered solution in PBS (pH 7.4). Normally 5% trehalose is added as protectant before lyophilization. |
| Bio-activity | Immobilized Human MSLN, His Tag at 0.5µg/ml (100µl/Well). Dose response curve for Anti-MSLN Antibody, hFc Tag with the EC50 of 12.4ng/ml determined by ELISA. |
| Molecular Mass | The protein has a predicted MW of 35.2 kDa. Due to glycosylation, the protein migrates to 40-50 kDa based on Tris-Bis PAGE result. |
| Endotoxin | Less than 1EU per µg by the LAL method. |
| Purity | > 95% as determined by Tris-Bis PAGE; > 95% as determined by HPLC |
| Storage | Reconstituted protein stable at -80°C for 12 months, 4°C for 1 week. Use a manual |

 Tel: 1-631-559-9269 1-516-512-3133

 Email: info@creative-biomart.com  Fax: 1-631-938-8127

 45-1 Ramsey Road, Shirley, NY 11967, USA

defrost freezer and avoid repeated freeze-thaw cycles.

Reconstitution

Centrifuge tubes before opening. Reconstituting to a concentration more than 100 µg/ml is recommended. Dissolve the lyophilized protein in distilled water.

GENE INFORMATION

Gene Name [MSLN mesothelin \[Homo sapiens \]](#)

Official Symbol [MSLN](#)

Synonyms MSLN; mesothelin; CAK1; MPF; CAK1 antigen; megakaryocyte potentiating factor; soluble MPF mesothelin related protein; pre-pro-megakaryocyte-potentiating factor; SMRP;

Gene ID [10232](#)

mRNA Refseq [NM_001177355](#)

Protein Refseq [NP_001170826](#)

MIM [601051](#)

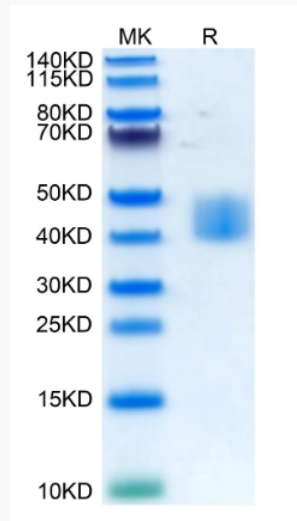
UniProt ID [Q13421](#)

 Tel: 1-631-559-9269 1-516-512-3133

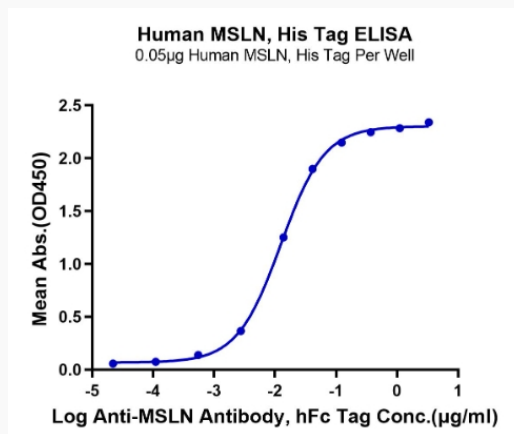
 Email: info@creative-biomart.com  Fax: 1-631-938-8127

 45-1 Ramsey Road, Shirley, NY 11967, USA

Tris-Bis PAGE



ELISA Data



 Tel: 1-631-559-9269 1-516-512-3133

 Email: info@creative-biomart.com  Fax: 1-631-938-8127

 45-1 Ramsey Road, Shirley, NY 11967, USA