

## Recombinant Human MSLN protein, hFc-tagged

Cat. No. MSLN-8558H Lot. No. (See product label)

### SPECIFICATION

<b>Product Overview</b>	Recombinant Human MSLN protein(Q13421-2)(Glu296-Gly580), fused with C-terminal hFc tag, was expressed in HEK293.
<b>Species</b>	Human
<b>Source</b>	HEK293
<b>ProteinLength</b>	Glu296-Gly580
<b>Tag</b>	C-hFc
<b>Form</b>	Lyophilized from 0.22µm filtered solution in PBS (pH 7.4). Normally 5% trehalose is added as protectant before lyophilization.
<b>Bio-activity</b>	Immobilized Human CA125, His Tag at 1µg/ml (100µl/well) on the plate. Dose response curve for Human MSLN, hFc Tag with the EC50 of 7.8ng/ml determined by ELISA.
<b>Molecular Mass</b>	The protein has a predicted MW of 59 kDa. Due to glycosylation, the protein migrates to 68-78 kDa based on Tris-Bis PAGE result.
<b>Endotoxin</b>	Less than 1EU per µg by the LAL method.
<b>Purity</b>	> 95% as determined by Tris-Bis PAGE

 Tel: 1-631-559-9269 1-516-512-3133

 Email: [info@creative-biomart.com](mailto:info@creative-biomart.com)  Fax: 1-631-938-8127

 45-1 Ramsey Road, Shirley, NY 11967, USA

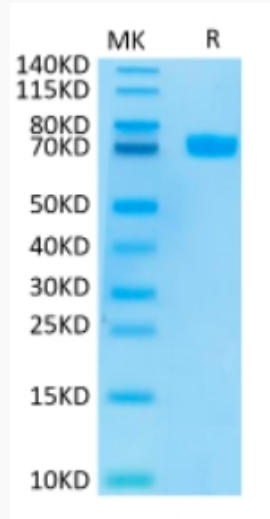
<b>Storage</b>	Reconstituted protein stable at -80°C for 12 months, 4°C for 1 week. Use a manual defrost freezer and avoid repeated freeze-thaw cycles.
<b>Reconstitution</b>	Centrifuge tubes before opening. Reconstituting to a concentration more than 100 µg/ml is recommended. Dissolve the lyophilized protein in distilled water.
<b>GENE INFORMATION</b>	
<b>Gene Name</b>	MSLN mesothelin [ Homo sapiens ]
<b>Official Symbol</b>	MSLN
<b>Synonyms</b>	MSLN; mesothelin; CAK1; MPF; CAK1 antigen; megakaryocyte potentiating factor; soluble MPF mesothelin related protein; pre-pro-megakaryocyte-potentiating factor; SMRP;
<b>Gene ID</b>	10232
<b>mRNA Refseq</b>	NM_001177355
<b>Protein Refseq</b>	NP_001170826
<b>MIM</b>	601051
<b>UniProt ID</b>	Q13421

 Tel: 1-631-559-9269 1-516-512-3133

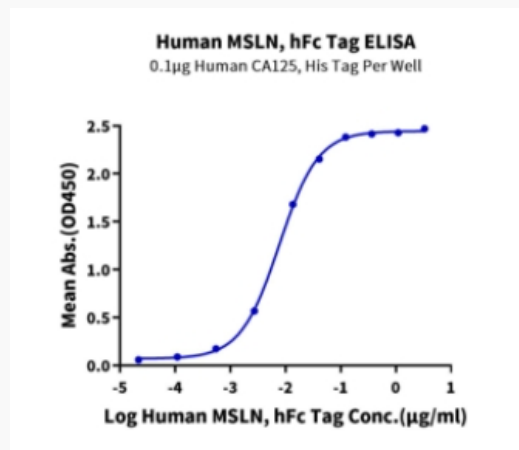
 Email: [info@creative-biomart.com](mailto:info@creative-biomart.com)  Fax: 1-631-938-8127

 45-1 Ramsey Road, Shirley, NY 11967, USA

**Tris-Bis PAGE**



**ELISA Data**



 Tel: 1-631-559-9269 1-516-512-3133

 Email: [info@creative-biomart.com](mailto:info@creative-biomart.com)  Fax: 1-631-938-8127

 45-1 Ramsey Road, Shirley, NY 11967, USA