

## Recombinant Human MSMB Protein, GST-tagged

Cat. No. MSMB-5661H Lot. No. (See product label)

### SPECIFICATION

|                         |  |
|-------------------------|--|
| <b>Product Overview</b> | Human MSMB full-length ORF ( AAH05257.1, 1 a.a. - 114 a.a.) recombinant protein with GST-tag at N-terminal.  |
| <b>Species</b>          | Human  |
| <b>Source</b>           | Wheat Germ   |
| <b>Description</b>      | <p>The protein encoded by this gene is a member of the immunoglobulin binding factor family. It is synthesized by the epithelial cells of the prostate gland and secreted into the seminal plasma. This protein has inhibin-like activity. It may have a role as an autocrine paracrine factor in uterine, breast and other female reproductive tissues. The expression of the encoded protein is found to be decreased in prostate cancer. Two alternatively spliced transcript variants encoding different isoforms are described for this gene. The use of alternate polyadenylation sites has been found for this gene. [provided by RefSeq]</p> |
| <b>Molecular Mass</b>   | 38.28 kDa  |
| <b>AA Sequence</b>      | MNVLLGSVVIFATFVTLCNASCYFIPNEGVPGDSTRKCMDLKGKHPINSEWQTDNCE<br>ETCTCYETEISCTLVSTPVG YDKDNCQRIFKKEDCKYIVVEKKDPKKTCSVSEWII   |
| <b>Applications</b>     | <p>Enzyme-linked Immunoabsorbent Assay<br/>Western Blot (Recombinant protein)<br/>Antibody Production<br/>Protein Array</p>  |

 Tel: 1-631-559-9269 1-516-512-3133

 Email: [info@creative-biomart.com](mailto:info@creative-biomart.com)  Fax: 1-631-938-8127

 45-1 Ramsey Road, Shirley, NY 11967, USA

|                         |  |
|-------------------------|--|
| <b>Notes</b>            | Best use within three months from the date of receipt of this protein.   |
| <b>Storage</b>          | Store at -80 centigrade. Aliquot to avoid repeated freezing and thawing.   |
| <b>Storage Buffer</b>   | 50 mM Tris-HCl, 10 mM reduced Glutathione, pH=8.0 in the elution buffer.   |
| <b>GENE INFORMATION</b> |  |
| <b>Gene Name</b>        | MSMB microseminoprotein, beta- [ Homo sapiens ]  |
| <b>Official Symbol</b>  | MSMB   |
| <b>Synonyms</b>         | MSMB; microseminoprotein, beta-; beta-microseminoprotein; IGBF; MSP; MSPB; PN44; PRPS; PSP; PSP 94; PSP57; PSP94; seminal plasma beta-inhibin; immunoglobulin binding factor; prostate secreted seminal plasma protein; prostate secretory protein of 94 amino acids; HPC13; PSP-94; |
| <b>Gene ID</b>          | 4477   |
| <b>mRNA Refseq</b>      | NM_002443  |
| <b>Protein Refseq</b>   | NP_002434  |
| <b>MIM</b>              | 157145   |
| <b>UniProt ID</b>       | P08118   |

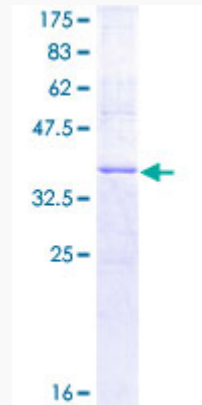
 Tel: 1-631-559-9269 1-516-512-3133

 Email: [info@creative-biomart.com](mailto:info@creative-biomart.com)  Fax: 1-631-938-8127

 45-1 Ramsey Road, Shirley, NY 11967, USA

**Quality Control**

**Testing:**



12.5% SDS-PAGE Stained with Coomassie Blue.

 Tel: 1-631-559-9269 1-516-512-3133

 Email: [info@creative-biomart.com](mailto:info@creative-biomart.com)  Fax: 1-631-938-8127

 45-1 Ramsey Road, Shirley, NY 11967, USA