

Active Recombinant Full Length Human MSMP Protein, C-Flag-tagged

Cat. No. MSMP-383HFL **Lot. No.** (See product label)

SPECIFICATION

Product Overview	Recombinant Full Length Human MSMP Protein, fused to Flag-tag at C-terminus, was expressed in Mammalian cells.
Species	Human
Source	Mammalian Cells
Description	This gene encodes a member of the beta-microseminoprotein family. Members of this protein family contain ten conserved cysteine residues that form intra-molecular disulfide bonds. The encoded protein may play a role in prostate cancer tumorigenesis.
Form	25 mM Tris HCl, pH 7.3, 100 mM glycine, 10% glycerol.
Bio-activity	Cell treatment
Molecular Mass	11.1 kDa
AA Sequence	MALRMLWAGQAKGILGGWGIICLVMSLLLQHPGVYSKCYFQAQAPCHYEGKYFTLG ESWLRKDCFHCTCL HPVGVGCCDTSQHPIDFPAGCEVRQEAGTCQFSLVQKSDPR LPCKGGGPDPEWGSANTPVPGAPAPHSSTRTRPLEQKLISEEDLAANDILDYKDDD DKV
Purity	> 80% as determined by SDS-PAGE and Coomassie blue staining.

 Tel: 1-631-559-9269 1-516-512-3133

 Email: info@creative-biomart.com  Fax: 1-631-938-8127

 45-1 Ramsey Road, Shirley, NY 11967, USA

Stability	Stable for 12 months from the date of receipt of the product under proper storage and handling conditions. Avoid repeated freeze-thaw cycles.
Storage	Store at -80 centigrade.
Concentration	>50 ug/mL as determined by microplate BCA method.
Preparation	Recombinant protein was captured through anti-DDK affinity column followed by conventional chromatography steps.
Protein Families	Transmembrane
Full Length	Full L.

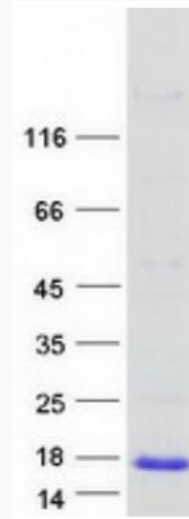
GENE INFORMATION

Gene Name	MSMP microseminoprotein, prostate associated [Homo sapiens (human)]
Official Symbol	MSMP
Synonyms	PSMP
Gene ID	692094
mRNA Refseq	NM_001044264.3
Protein Refseq	NP_001037729.1
MIM	612191
UniProt ID	Q1L6U9

 Tel: 1-631-559-9269 1-516-512-3133

 Email: info@creative-biomart.com  Fax: 1-631-938-8127

 45-1 Ramsey Road, Shirley, NY 11967, USA



Coomassie blue staining of purified MSMP protein.

 Tel: 1-631-559-9269 1-516-512-3133

 Email: info@creative-biomart.com  Fax: 1-631-938-8127

 45-1 Ramsey Road, Shirley, NY 11967, USA