

Recombinant Human MSR1 Protein, His-tagged

Cat. No. MSR1-103H Lot. No. (See product label)

SPECIFICATION

Product Overview	Recombinant Human MSR1 Protein with His tag was expressed in E. coli.
Species	Human
Source	E.coli
Description	Macrophage Scavenger receptor types I and II (MSR1, and also known as SCARA1) are members of the class A macrophage scavenger receptor family. These proteins bind large quantities of modified lipoproteins and promote endocytosis. Upregulation of MSR1 in infiltrating myeloid cells may mediate clearance of specific damage signals in response to tissue injury, including ischemic stroke. MSR1 germ line mutations are also associated with increased prostate cancer susceptibility in some patient cohorts. MSR1 is observed to be upregulated in differentiated THP-1 cells.
Molecular Mass	~40 kDa
AA Sequence	KWETKNCSVSSTNANDITQSLTGKGNDSSEEMRFQEVFMEHMSNMEKRIQHILDME ANLMDTEHFQNFSMTTDQRFNDILLQLSTLFSSVQGHGNAIDEISKSLISLNTLLDLQ LNIENTLNGKIQENTFKQQEEISKLEERVYNVSAEIMAMKEEQVHLEQEIKGEVKVLNNI TNDLRLKDWEHSQTLRNITLIQPPGPPGEGKDRGPTGESGPRGFPPGPIGPPGLKG DRGAIGFPGSRGLPGYAGRPGNSGPKGQKGEKSGNTLTPFTKVRLLVGGSGPHEG RVEILHSGQWGTICDDRWEVRVGQVVCRLGYPGVQAVHKAHFGQGTGPIWLNE VFCFGRESSIEECKIRQWGTRACSHSEDAGVTCTL
Purity	Transferred into competent cells and the supernatant was purified by NI column

 Tel: 1-631-559-9269 1-516-512-3133

 Email: info@creative-biomart.com  Fax: 1-631-938-8127

 45-1 Ramsey Road, Shirley, NY 11967, USA

affinity chromatography and the purity is > 85% (by SDS-PAGE).

Notes

For research use only, not for use in diagnostic procedure.

Storage

Store at 4 centigrade short term. Aliquot and store at -20 centigrade long term. Avoid freeze-thaw cycles.

Concentration

≥0.5 mg/mL

Storage Buffer

PBS, 4M Urea, pH7.4

GENE INFORMATION

Gene Name

[MSR1 macrophage scavenger receptor 1 \[Homo sapiens \(human\) \]](#)

Official Symbol

[MSR1](#)

Synonyms

MSR1; macrophage scavenger receptor 1; macrophage scavenger receptor types I and II; CD204; SCARA1; scavenger receptor class A member 1; scavenger receptor class A, member 1; macrophage scavenger receptor type III; macrophage acetylated LDL receptor I and II; SRA; SR-A; phSR1; phSR2;

Gene ID

[4481](#)

mRNA Refseq

[NM_138716](#)

Protein Refseq

[NP_619730](#)

MIM

[153622](#)

UniProt ID

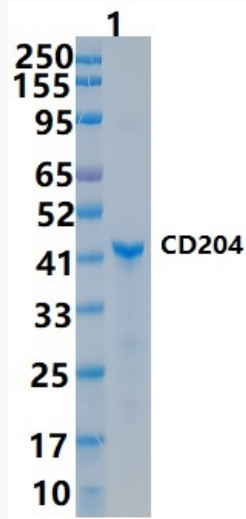
[P21757](#)

 Tel: 1-631-559-9269 1-516-512-3133

 Email: info@creative-biomart.com  Fax: 1-631-938-8127

 45-1 Ramsey Road, Shirley, NY 11967, USA

SDS-PAGE



 Tel: 1-631-559-9269 1-516-512-3133

 Email: info@creative-biomart.com  Fax: 1-631-938-8127

 45-1 Ramsey Road, Shirley, NY 11967, USA