

Recombinant Human MSR1 Protein (Lys77-Leu451), C-His tagged

Cat. No. MSR1-4609H Lot. No. (See product label)

SPECIFICATION

Product Overview	Recombinant human MSR1 (Lys77-Leu451) fused with the C-terminal His tag was expressed in Mammalian cells.
Species	Human
Source	Mammalian Cells
ProteinLength	Lys77-Leu451
Form	Lyophilized powder/frozen liquid
Molecular Mass	41.36 kDa
Endotoxin	< 1.0 EU/μg of the protein as determined by the LAL method.
Purity	>90% as determined by SDS-PAGE.
Notes	For research use only.
Storage	Use a manual defrost freezer and avoid repeated freeze thaw cycles. Store at 2 to 8 centigrade for one week. Store at -20 to -80 centigrade for twelve months from the date of receipt.
Storage Buffer	Supplied as solution form in PBS or lyophilized from PBS.

 Tel: 1-631-559-9269 1-516-512-3133

 Email: info@creative-biomart.com  Fax: 1-631-938-8127

 45-1 Ramsey Road, Shirley, NY 11967, USA

Reconstitution Reconstitute in sterile water for a stock solution.

Shipping They are shipped out with dry ice/blue ice unless customers require otherwise.

GENE INFORMATION

Gene Name [MSR1 macrophage scavenger receptor 1 \[Homo sapiens \(human\) \]](#)

Official Symbol [MSR1](#)

Synonyms MSR1; macrophage scavenger receptor 1; macrophage scavenger receptor types I and II; CD204; SCARA1; scavenger receptor class A member 1; scavenger receptor class A, member 1; macrophage scavenger receptor type III; macrophage acetylated LDL receptor I and II; SRA; SR-A; phSR1; phSR2;

Gene ID [4481](#)

mRNA Refseq [NM_138716](#)

Protein Refseq [NP_619730](#)

MIM [153622](#)

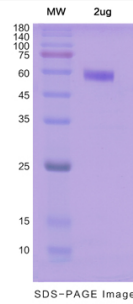
UniProt ID [P21757](#)

 Tel: 1-631-559-9269 1-516-512-3133

 Email: info@creative-biomart.com  Fax: 1-631-938-8127

 45-1 Ramsey Road, Shirley, NY 11967, USA

SDS-PAGE



 Tel: 1-631-559-9269 1-516-512-3133

 Email: info@creative-biomart.com  Fax: 1-631-938-8127

 45-1 Ramsey Road, Shirley, NY 11967, USA