

Recombinant Human MSRB3 Protein, GST-tagged

Cat. No. MSRB3-5668H Lot. No. (See product label)

SPECIFICATION

Product Overview	Human MSRB3 full-length ORF (NP_001026849.1, 1 a.a. - 185 a.a.) recombinant protein with GST-tag at N-terminal.
Species	Human
Source	Wheat Germ
Description	The protein encoded by this gene catalyzes the reduction of methionine sulfoxide to methionine. This enzyme acts as a monomer and requires zinc as a cofactor. Several transcript variants encoding two different isoforms have been found for this gene. One of the isoforms localizes to mitochondria while the other localizes to endoplasmic reticula. [provided by RefSeq, Jul 2010]
Molecular Mass	46.4 kDa
AA Sequence	MSAFNLLHLVTKSQPVALRACGLPSGSCRDKKNCKVVFSQQELRKRLTPLQYHVTQ EKGTESAFEGEYTHHKDPGIYKCVVCGTPLFKSETKFDSGSGWPSFHDVINSEAITF TDDFSYGMHRVETSCSQCGAHLGHIFDDGPRPTGKRYCINSAALSFTPADSSGTAE GGSGVASPAQADKAEL
Applications	Enzyme-linked Immunoabsorbent Assay Western Blot (Recombinant protein) Antibody Production Protein Array

 Tel: 1-631-559-9269 1-516-512-3133

 Email: info@creative-biomart.com  Fax: 1-631-938-8127

 45-1 Ramsey Road, Shirley, NY 11967, USA

Notes	Best use within three months from the date of receipt of this protein.
Storage	Store at -80 centigrade. Aliquot to avoid repeated freezing and thawing.
Storage Buffer	50 mM Tris-HCl, 10 mM reduced Glutathione, pH=8.0 in the elution buffer.

GENE INFORMATION

Gene Name	MSRB3 methionine sulfoxide reductase B3 [Homo sapiens]
Official Symbol	MSRB3
Synonyms	MSRB3; methionine sulfoxide reductase B3; deafness, autosomal recessive 74 , DFNB74; methionine-R-sulfoxide reductase B3; DKFZp686C1178; FLJ36866; methionine-R-sulfoxide reductase B3, mitochondrial; DFNB74;
Gene ID	253827
mRNA Refseq	NM_001031679
Protein Refseq	NP_001026849
MIM	613719
UniProt ID	Q8IXL7

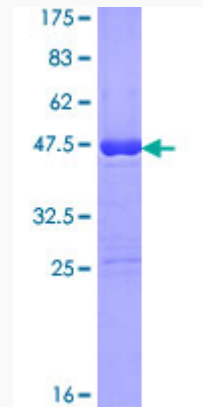
 Tel: 1-631-559-9269 1-516-512-3133

 Email: info@creative-biomart.com  Fax: 1-631-938-8127

 45-1 Ramsey Road, Shirley, NY 11967, USA

Quality Control

Testing:



12.5% SDS-PAGE Stained with Coomassie Blue.

 Tel: 1-631-559-9269 1-516-512-3133

 Email: info@creative-biomart.com  Fax: 1-631-938-8127

 45-1 Ramsey Road, Shirley, NY 11967, USA