

## Recombinant Human MSRB3 Protein, Myc/DDK-tagged, C13 and N15-labeled

**Cat. No.** MSRB3-971H    **Lot. No.** (See product label)

### SPECIFICATION

<b>Product Overview</b>	MSRB3 MS Standard C13 and N15-labeled recombinant protein (NP_001026849) with a C-terminal MYC/DDK tag, was expressed in HEK293 cells.
<b>Species</b>	Human
<b>Source</b>	HEK293
<b>Description</b>	The protein encoded by this gene catalyzes the reduction of methionine sulfoxide to methionine. This enzyme acts as a monomer and requires zinc as a cofactor. Several transcript variants encoding two different isoforms have been found for this gene. One of the isoforms localizes to mitochondria while the other localizes to endoplasmic reticula.
<b>Molecular Mass</b>	20 kDa
<b>AA Sequence</b>	MSAFNLLHLVTKSQPVALRACGLPSGSCRDKKNCKVVFSQQELRKRLTPLQYHVTVQ EKGTESAFEGEYTHHKDPGIYKCVVCGTPLFKSETKFDSGSGWPSFHDVINSEAITF TDDFSYGMHRVETSCSQCGAHLGHIFDDGPRPTGKRYCINSAALSFTPADSSGTAE GGSGVASPAQADKAELTRTRPLEQKLISEEDLAANDILDYKDDDDKV
<b>Purity</b>	> 80% as determined by SDS-PAGE and Coomassie blue staining
<b>Stability</b>	Stable for 3 months from receipt of products under proper storage and handling conditions.

 Tel: 1-631-559-9269    1-516-512-3133

 Email: [info@creative-biomart.com](mailto:info@creative-biomart.com)     Fax: 1-631-938-8127

 45-1 Ramsey Road, Shirley, NY 11967, USA

<b>Storage</b>	Store at -80 centigrade. Avoid repeated freeze-thaw cycles.
<b>Concentration</b>	50 µg/mL as determined by BCA
<b>Storage Buffer</b>	100 mM glycine, 25 mM Tris-HCl, pH 7.3.

## GENE INFORMATION

<b>Gene Name</b>	MSRB3 methionine sulfoxide reductase B3 [ Homo sapiens (human) ]
<b>Official Symbol</b>	MSRB3
<b>Synonyms</b>	MSRB3; methionine sulfoxide reductase B3; deafness, autosomal recessive 74, DFNB74; methionine-R-sulfoxide reductase B3; DKFZp686C1178; FLJ36866; methionine-R-sulfoxide reductase B3, mitochondrial; DFNB74;
<b>Gene ID</b>	253827
<b>mRNA Refseq</b>	NM_001031679
<b>Protein Refseq</b>	NP_001026849
<b>MIM</b>	613719
<b>UniProt ID</b>	Q8IXL7

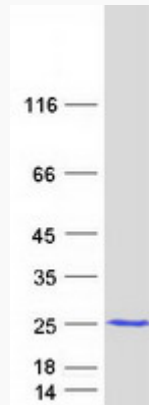
 Tel: 1-631-559-9269 1-516-512-3133

 Email: [info@creative-biomart.com](mailto:info@creative-biomart.com)  Fax: 1-631-938-8127

 45-1 Ramsey Road, Shirley, NY 11967, USA



SDS-PAGE



Tel: 1-631-559-9269 1-516-512-3133

Email: [info@creative-biomart.com](mailto:info@creative-biomart.com) Fax: 1-631-938-8127

45-1 Ramsey Road, Shirley, NY 11967, USA