

## Recombinant Human MST1 Protein, GST-tagged

Cat. No. MST1-5670H Lot. No. (See product label)

### SPECIFICATION

<b>Product Overview</b>	Human MST1 full-length ORF ( NP_066278.2, 1 a.a. - 711 a.a.) recombinant protein with GST-tag at N-terminal.
<b>Species</b>	Human
<b>Source</b>	Wheat Germ
<b>Description</b>	The protein encoded by this gene contains four kringle domains and a serine protease domain, similar to that found in hepatic growth factor. Despite the presence of the serine protease domain, the encoded protein may not have any proteolytic activity. The receptor for this protein is RON tyrosine kinase, which upon activation stimulates ciliary motility of ciliated epithelial lung cells. This protein is secreted and cleaved to form an alpha chain and a beta chain bridged by disulfide bonds. [provided by RefSeq, Jan 2010]
<b>Molecular Mass</b>	106.7 kDa
<b>AA Sequence</b>	<p>MGWLPLLLLLTQCLGVPQGRSPLNDFQVLRGTELQHLLHAVVPGPWQEDVADAAE  CAGRCGPLMDCRAFHYNVSSHGCQLLPWTQHSPHTRLRRSGRCDLFQKKDYVRT  CIMNNGVGYRGTMTTVGGLPCQAWSHKFPNDHKYTPTLRNGLEENFCRNPDGDP  GGPWCYTTDPAVRFQSCGIKSCREAAACVWCNGEEYRGAVDRTESGRECQRWDLQ  HPHQHPFEPGKFLDQGLDDNYCRNPDGSERPWCYTTDPQIEREFCDLPRCGSEAEQ  PRQEATTVSCFRGKGEYRGTANTTTAGVPCQRWDAQIPHQHRFTPEKYACKDLR  ENFCRNPDGSEAPWCFTLRPGMRAAFCYQIRRCTDDVRPQDCYHGAGEQYRGTV</p>

 Tel: 1-631-559-9269 1-516-512-3133

 Email: [info@creative-biomart.com](mailto:info@creative-biomart.com)  Fax: 1-631-938-8127

 45-1 Ramsey Road, Shirley, NY 11967, USA

SKTRKGVQCQRWSAETPHKPQFTFTSEPHAQLEENFCRNPDGDSHGPWCYTMDP  
 RTPFDYCALRRRCADDQPPSILDPPDQVQFEKCGKRVDRLDQRRSKLRVVGHPGN  
 SPWTVSLRNRQGQHFCGGSLVKEQWILTARQCFSSCHMPLTGYEVWLGTLFQNPQ  
 HGEPQLRQRPVAKMVCGPSGSQLVLLKLSVTLNQRVALICLPPEWYVPPGKTC  
 EIAGWGETKGTGNDTVLNVALLNVISNQECNIKHRGRVRESEMCTEGLLAPVGACE  
 GDYGGPLACFTHNCWVLEGIIPNRVCARSRWPVAVFTRVSVFVDWIHKVMRLG

<b>Applications</b>	Enzyme-linked Immunoabsorbent Assay Western Blot (Recombinant protein) Antibody Production Protein Array
<b>Notes</b>	Best use within three months from the date of receipt of this protein.
<b>Storage</b>	Store at -80 centigrade. Aliquot to avoid repeated freezing and thawing.
<b>Storage Buffer</b>	50 mM Tris-HCl, 10 mM reduced Glutathione, pH=8.0 in the elution buffer.

## GENE INFORMATION

<b>Gene Name</b>	MST1 macrophage stimulating 1 (hepatocyte growth factor-like) [ Homo sapiens ]
<b>Official Symbol</b>	MST1
<b>Synonyms</b>	MST1; macrophage stimulating 1 (hepatocyte growth factor-like); D3F15S2, DNF15S2, HGFL; hepatocyte growth factor-like protein; hepatocyte growth factor like protein homolog; MSP; NF15S2; macrophage-stimulating protein; hepatocyte growth factor-like protein homolog; HGFL; D3F15S2; DNF15S2;
<b>Gene ID</b>	4485

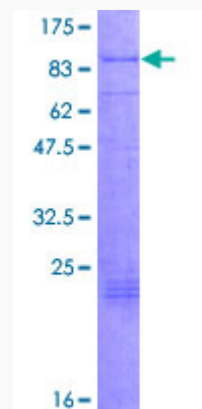
mRNA Refseq [NM\\_020998](#)

Protein Refseq [NP\\_066278](#)

MIM [142408](#)

UniProt ID [P26927](#)

**Quality Control  
Testing:**



12.5% SDS-PAGE Stained with Coomassie Blue.

 Tel: 1-631-559-9269 1-516-512-3133

 Email: [info@creative-biomart.com](mailto:info@creative-biomart.com)  Fax: 1-631-938-8127

 45-1 Ramsey Road, Shirley, NY 11967, USA