

# Recombinant Human MST1R Protein (His1092-Leu1316), N-His tagged

Cat. No. MST1R-0901H Lot. No. (See product label)

## SPECIFICATION

<b>Product Overview</b>	Recombinant Human CD136/MST1R (His1092-Leu1316) fused with the N-His tag was expressed in E. coli.
<b>Species</b>	Human
<b>Source</b>	E.coli
<b>ProteinLength</b>	His1092-Leu1316
<b>Form</b>	Lyophilized powder/frozen liquid
<b>Molecular Mass</b>	28.35 kDa
<b>Purity</b>	>90% as determined by SDS-PAGE.
<b>Notes</b>	For research use only.
<b>Storage</b>	Use a manual defrost freezer and avoid repeated freeze thaw cycles. Store at 2 to 8 centigrade for one week. Store at -20 to -80 centigrade for twelve months from the date of receipt.
<b>Storage Buffer</b>	0.01M PBS, pH 7.4, 0.02% NLS
<b>Reconstitution</b>	Reconstitute in sterile water for a stock solution.

 Tel: 1-631-559-9269 1-516-512-3133

 Email: [info@creative-biomart.com](mailto:info@creative-biomart.com)  Fax: 1-631-938-8127

 45-1 Ramsey Road, Shirley, NY 11967, USA

**Shipping**

They are shipped out with dry ice/blue ice unless customers require otherwise.

**GENE INFORMATION**
**Gene Name**

MST1R macrophage stimulating 1 receptor (c-met-related tyrosine kinase) [ Homo sapiens (human) ]

**Official Symbol**

MST1R

**Synonyms**

MST1R; macrophage stimulating 1 receptor (c-met-related tyrosine kinase); PTK8, PTK8 protein tyrosine kinase 8, RON; macrophage-stimulating protein receptor; CD136; CDw136; p185-Ron; MSP receptor; RON variant E2E3; MST1R variant RON30; MST1R variant RON62; soluble RON variant 1; soluble RON variant 2; soluble RON variant 3; soluble RON variant 4; c-met-related tyrosine kinase; PTK8 protein tyrosine kinase 8; RON; PTK8;

**Gene ID**

4486

**mRNA Refseq**

NM\_001244937

**Protein Refseq**

NP\_001231866

**MIM**

600168

**UniProt ID**

Q04912

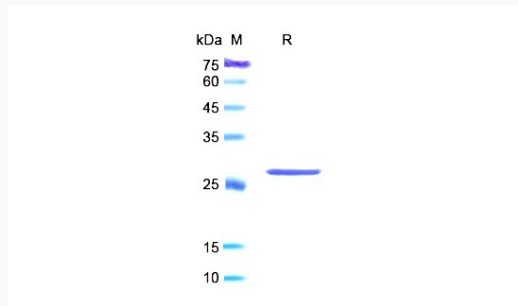
 Tel: 1-631-559-9269 1-516-512-3133

 Email: [info@creative-biomart.com](mailto:info@creative-biomart.com)  Fax: 1-631-938-8127

 45-1 Ramsey Road, Shirley, NY 11967, USA



SDS-PAGE



Tel: 1-631-559-9269 1-516-512-3133

Email: [info@creative-biomart.com](mailto:info@creative-biomart.com) Fax: 1-631-938-8127

45-1 Ramsey Road, Shirley, NY 11967, USA