

## Recombinant Human MST1R Protein (Met1-Leu571), C-His tagged

Cat. No. MST1R-4614H Lot. No. (See product label)

### SPECIFICATION

<b>Product Overview</b>	Recombinant human MST1R (Met1-Leu571) fused with the C-terminal His tag was expressed in Mammalian cells.
<b>Species</b>	Human
<b>Source</b>	Mammalian Cells
<b>ProteinLength</b>	Met1-Leu571
<b>Form</b>	Lyophilized powder/frozen liquid
<b>Molecular Mass</b>	62.81 kDa
<b>Endotoxin</b>	< 1.0 EU/μg of the protein as determined by the LAL method.
<b>Purity</b>	>90% as determined by SDS-PAGE.
<b>Notes</b>	For research use only.
<b>Storage</b>	Use a manual defrost freezer and avoid repeated freeze thaw cycles. Store at 2 to 8 centigrade for one week. Store at -20 to -80 centigrade for twelve months from the date of receipt.
<b>Storage Buffer</b>	Supplied as solution form in PBS or lyophilized from PBS.

 Tel: 1-631-559-9269 1-516-512-3133

 Email: [info@creative-biomart.com](mailto:info@creative-biomart.com)  Fax: 1-631-938-8127

 45-1 Ramsey Road, Shirley, NY 11967, USA

**Reconstitution** Reconstitute in sterile water for a stock solution.

**Shipping** They are shipped out with dry ice/blue ice unless customers require otherwise.

## GENE INFORMATION

**Gene Name** [MST1R macrophage stimulating 1 receptor \(c-met-related tyrosine kinase\) \[ Homo sapiens \(human\) \]](#)

**Official Symbol** [MST1R](#)

**Synonyms** MST1R; macrophage stimulating 1 receptor (c-met-related tyrosine kinase); PTK8, PTK8 protein tyrosine kinase 8, RON; macrophage-stimulating protein receptor; CD136; CDw136; p185-Ron; MSP receptor; RON variant E2E3; MST1R variant RON30; MST1R variant RON62; soluble RON variant 1; soluble RON variant 2; soluble RON variant 3; soluble RON variant 4; c-met-related tyrosine kinase; PTK8 protein tyrosine kinase 8; RON; PTK8;

**Gene ID** [4486](#)

**mRNA Refseq** [NM\\_001244937](#)

**Protein Refseq** [NP\\_001231866](#)

**MIM** [600168](#)

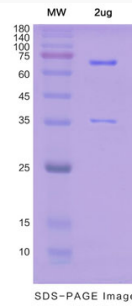
**UniProt ID** [Q04912](#)

 Tel: 1-631-559-9269 1-516-512-3133

 Email: [info@creative-biomart.com](mailto:info@creative-biomart.com)  Fax: 1-631-938-8127

 45-1 Ramsey Road, Shirley, NY 11967, USA

## SDS-PAGE



 Tel: 1-631-559-9269 1-516-512-3133

 Email: [info@creative-biomart.com](mailto:info@creative-biomart.com)  Fax: 1-631-938-8127

 45-1 Ramsey Road, Shirley, NY 11967, USA