

Recombinant Human MSX2 Protein, Myc/DDK-tagged, C13 and N15-labeled

Cat. No. MSX2-6143H **Lot. No.** (See product label)

SPECIFICATION

Product Overview

MSX2 MS Standard C13 and N15-labeled recombinant protein (NP_002440) with a C-terminal MYC/DDK tag, was expressed in HEK293 cells.

Species

Human

Source

HEK293

Description

This gene encodes a member of the muscle segment homeobox gene family. The encoded protein is a transcriptional repressor whose normal activity may establish a balance between survival and apoptosis of neural crest-derived cells required for proper craniofacial morphogenesis. The encoded protein may also have a role in promoting cell growth under certain conditions and may be an important target for the RAS signaling pathways. Mutations in this gene are associated with parietal foramina 1 and craniosynostosis type 2.

Molecular Mass

28.9 kDa

AA Sequence

MASPSKGNLDFSPDEEGPAVVAGPGPGGGAEGAAEERRVKVSSLPFSVEALMSD
 KKPPKEASPLPAESASAGATLRPLLLSGHGAREAHSPGPLVKPFETASVKSENSED
 GAAWMQEPGRYSPPRHTSPTTCTLRKHKTNRKPRTPFTTSQLLALERKFRQKQYL
 SIAERAEFSSSLNLTETQVKIWFQNRRAKAKRLQEALEKLKMAAKPMLPSSFSLPF
 PISSPLQAASIYGASYPFHRPVLPPIPPVGLYATPVGYGMYHLSTRTRPLEQKLISEEDL
 AANDILDYKDDDDKV

 Tel: 1-631-559-9269 1-516-512-3133

 Email: info@creative-biomart.com  Fax: 1-631-938-8127

 45-1 Ramsey Road, Shirley, NY 11967, USA

Purity	> 80% as determined by SDS-PAGE and Coomassie blue staining
Stability	Stable for 3 months from receipt of products under proper storage and handling conditions.
Storage	Store at -80 centigrade. Avoid repeated freeze-thaw cycles.
Concentration	50 µg/mL as determined by BCA
Storage Buffer	100 mM glycine, 25 mM Tris-HCl, pH 7.3.

GENE INFORMATION

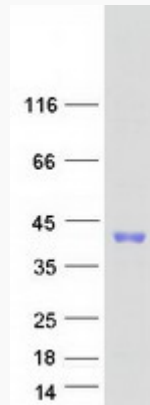
Gene Name	MSX2 msh homeobox 2 [Homo sapiens (human)]
Official Symbol	MSX2
Synonyms	MSX2; msh homeobox 2; msh (Drosophila) homeo box homolog 2, msh homeobox homolog 2 (Drosophila), parietal foramina 1, PFM1; homeobox protein MSX-2; craniosynostosis; type 2; CRS2; FPP; HOX8; MSH; PFM; msh homeo box 2; homeobox protein Hox-8; msh homeobox homolog 2; PFM1;
Gene ID	4488
mRNA Refseq	NM_002449
Protein Refseq	NP_002440
MIM	123101
UniProt ID	P35548

 Tel: 1-631-559-9269 1-516-512-3133

 Email: info@creative-biomart.com  Fax: 1-631-938-8127

 45-1 Ramsey Road, Shirley, NY 11967, USA

SDS-PAGE



 Tel: 1-631-559-9269 1-516-512-3133

 Email: info@creative-biomart.com  Fax: 1-631-938-8127

 45-1 Ramsey Road, Shirley, NY 11967, USA