

Recombinant Human MT1A protein, His-tagged

Cat. No. MT1A-1520H Lot. No. (See product label)

SPECIFICATION

Product Overview	Recombinant Human MT1A aa. (Met1~Gly52) fused with N-terminal His tag was produced in E. coli cells.
Species	Human
Source	E.coli
ProteinLength	Met1~Gly52
Form	Freeze-dried powder
Molecular Mass	16kDa as determined by SDS-PAGE reducing conditions.
Endotoxin	<1.0EU per 1g (determined by the LAL method).
Purity	>98%
Characteristic	The isoelectric point is 8.7.
Applications	Positive Control; Immunogen; SDS-PAGE; WB.
Stability	The thermal stability is described by the loss rate. The loss rate was determined by accelerated thermal degradation test, that is, incubate the protein at 37°C for 48h, and no obvious degradation and precipitation were observed. The loss rate is less than 5% within the expiration date under appropriate storage condition.

 Tel: 1-631-559-9269 1-516-512-3133

 Email: info@creative-biomart.com  Fax: 1-631-938-8127

 45-1 Ramsey Road, Shirley, NY 11967, USA

Storage	Avoid repeated freeze/thaw cycles. Store at 2-8°C for one month. Aliquot and store at -80°C for 12 months.
Concentration	200g/mL
Storage buffer	10mM PBS, pH7.4, containing 1mM DTT, 5% trehalose and 0.01% sarcosyl.
Reconstitution	Reconstitute in 10mM PBS (pH7.4) to a concentration of 0.1-1.0 mg/mL. Do not vortex.

GENE INFORMATION

Gene Name	MT1A metallothionein 1A [Homo sapiens (human)]
Official Symbol	MT1A
Synonyms	MT1; MTC; MT1S; MT-1A; MT-IA; metallothionein 1A (functional) metallothionein 1S; metallothionein-IA; metallothionein-1A
Gene ID	4489
mRNA Refseq	NM_005946.2
Protein Refseq	NP_005937.2
UniProt ID	P04731

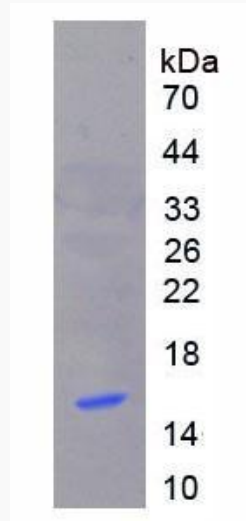
 Tel: 1-631-559-9269 1-516-512-3133

 Email: info@creative-biomart.com  Fax: 1-631-938-8127

 45-1 Ramsey Road, Shirley, NY 11967, USA



SDS-PAGE



Tel: 1-631-559-9269 1-516-512-3133

Email: info@creative-biomart.com Fax: 1-631-938-8127

45-1 Ramsey Road, Shirley, NY 11967, USA