

Recombinant Human MT1A Protein, Myc/DDK-tagged, C13 and N15-labeled

Cat. No. MT1A-3491H Lot. No. (See product label)

SPECIFICATION

Product Overview	MT1A MS Standard C13 and N15-labeled recombinant protein (NP_005937) with a C-terminal MYC/DDK tag, was expressed in HEK293 cells.
Species	Human
Source	HEK293
Description	<p>This gene is a member of the metallothionein family of genes. Proteins encoded by this gene family are low in molecular weight, are cysteine-rich, lack aromatic residues, and bind divalent heavy metal ions. The conserved cysteine residues co-ordinate metal ions using mercaptide linkages. These proteins act as anti-oxidants, protect against hydroxyl free radicals, are important in homeostatic control of metal in the cell, and play a role in detoxification of heavy metals. Disruption of two metallothionein genes in mouse resulted in defects in protection against heavy metals, oxidative stress, immune reactions, carcinogens, and displayed obesity.</p>
Molecular Mass	6.1 kDa
Purity	> 80% as determined by SDS-PAGE and Coomassie blue staining
Stability	Stable for 3 months from receipt of products under proper storage and handling conditions.
Storage	Store at -80 centigrade. Avoid repeated freeze-thaw cycles.

 Tel: 1-631-559-9269 1-516-512-3133

 Email: info@creative-biomart.com  Fax: 1-631-938-8127

 45-1 Ramsey Road, Shirley, NY 11967, USA

Concentration 50 µg/mL as determined by BCA

Storage Buffer 100 mM glycine, 25 mM Tris-HCl, pH 7.3.

GENE INFORMATION

Gene Name MT1A metallothionein 1A [Homo sapiens (human)]

Official Symbol MT1A

Synonyms MT1A; metallothionein 1A; MT1; MTC; MT1S; MT-1A; MT-IA; metallothionein-1A; metallothionein 1A (functional); metallothionein 1S; metallothionein-IA

Gene ID 4489

mRNA Refseq NM_005946

Protein Refseq NP_005937

MIM 156350

UniProt ID P04731

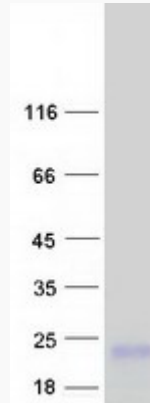
 Tel: 1-631-559-9269 1-516-512-3133

 Email: info@creative-biomart.com  Fax: 1-631-938-8127

 45-1 Ramsey Road, Shirley, NY 11967, USA



SDS-PAGE



Tel: 1-631-559-9269 1-516-512-3133

Email: info@creative-biomart.com Fax: 1-631-938-8127

45-1 Ramsey Road, Shirley, NY 11967, USA