

## Recombinant Human MT1A Protein (Met1-Ala61), N-His tagged

Cat. No. MT1A-3735H Lot. No. (See product label)

### SPECIFICATION

<b>Product Overview</b>	Recombinant human MT1A (Met1-Ala61) fused with the N-His tag was expressed in E. coli.
<b>Species</b>	Human
<b>Source</b>	E.coli
<b>ProteinLength</b>	Met1-Ala61
<b>Description</b>	<p>This gene is a member of the metallothionein family of genes. Proteins encoded by this gene family are low in molecular weight, are cysteine-rich, lack aromatic residues, and bind divalent heavy metal ions. The conserved cysteine residues co-ordinate metal ions using mercaptide linkages. These proteins act as anti-oxidants, protect against hydroxyl free radicals, are important in homeostatic control of metal in the cell, and play a role in detoxification of heavy metals. Disruption of two metallothionein genes in mouse resulted in defects in protection against heavy metals, oxidative stress, immune reactions, carcinogens, and displayed obesity.</p>
<b>Form</b>	Lyophilized powder/frozen liquid
<b>Molecular Mass</b>	8.43 kDa
<b>Purity</b>	>90% as determined by SDS-PAGE.
<b>Notes</b>	For research use only.

 Tel: 1-631-559-9269 1-516-512-3133

 Email: [info@creative-biomart.com](mailto:info@creative-biomart.com)  Fax: 1-631-938-8127

 45-1 Ramsey Road, Shirley, NY 11967, USA

<b>Storage</b>	Use a manual defrost freezer and avoid repeated freeze thaw cycles. Store at 2 to 8 centigrade for one week. Store at -20 to -80 centigrade for twelve months from the date of receipt.
<b>Storage Buffer</b>	0.01M PBS, pH 7.4, 0.02% NLS
<b>Reconstitution</b>	Reconstitute in sterile water for a stock solution.
<b>Shipping</b>	They are shipped out with dry ice/blue ice unless customers require otherwise.

## GENE INFORMATION

<b>Gene Name</b>	MT1A metallothionein 1A [ Homo sapiens (human) ]
<b>Official Symbol</b>	MT1A
<b>Synonyms</b>	MT1A; metallothionein 1A; MT1; MTC; MT1S; MT-1A; MT-IA; metallothionein-1A; metallothionein 1A (functional); metallothionein 1S; metallothionein-IA
<b>Gene ID</b>	4489
<b>mRNA Refseq</b>	NM_005946
<b>Protein Refseq</b>	NP_005937
<b>MIM</b>	156350
<b>UniProt ID</b>	P04731

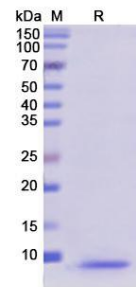
 Tel: 1-631-559-9269 1-516-512-3133

 Email: [info@creative-biomart.com](mailto:info@creative-biomart.com)  Fax: 1-631-938-8127

 45-1 Ramsey Road, Shirley, NY 11967, USA



SDS-PAGE



Tel: 1-631-559-9269 1-516-512-3133

Email: [info@creative-biomart.com](mailto:info@creative-biomart.com) Fax: 1-631-938-8127

45-1 Ramsey Road, Shirley, NY 11967, USA