

Recombinant Full Length Human MT2A Protein, C-Flag-tagged

Cat. No. MT2A-1200HFL **Lot. No.** (See product label)

SPECIFICATION

Product Overview	Recombinant Full Length Human MT2A Protein, fused to Flag-tag at C-terminus, was expressed in Mammalian cells.
Species	Human
Source	Mammalian Cells
Description	This gene is a member of the metallothionein family of genes. Proteins encoded by this gene family are low in molecular weight, are cysteine-rich, lack aromatic residues, and bind divalent heavy metal ions, altering the intracellular concentration of heavy metals in the cell. These proteins act as anti-oxidants, protect against hydroxyl free radicals, are important in homeostatic control of metal in the cell, and play a role in detoxification of heavy metals. The encoded protein interacts with the protein encoded by the homeobox containing 1 gene in some cell types, controlling intracellular zinc levels, affecting apoptotic and autophagy pathways. Some polymorphisms in this gene are associated with an increased risk of cancer.
Form	25 mM Tris HCl, pH 7.3, 100 mM glycine, 10% glycerol.
Molecular Mass	5.9 kDa
AA Sequence	MDPNCSCAAGDSCTCAGSCKCKECKCTSCKKSCCSCPVGCAKCAQGCICKGAS DKCSCCATRTRPLEQKLISEEDLAANDILDYKDDDDKV
Purity	> 80% as determined by SDS-PAGE and Coomassie blue staining.

 Tel: 1-631-559-9269 1-516-512-3133

 Email: info@creative-biomart.com  Fax: 1-631-938-8127

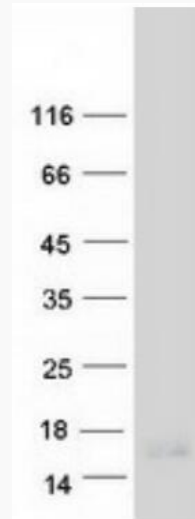
 45-1 Ramsey Road, Shirley, NY 11967, USA

Stability	Stable for 12 months from the date of receipt of the product under proper storage and handling conditions. Avoid repeated freeze-thaw cycles.
Storage	Store at -80 centigrade.
Concentration	>50 ug/mL as determined by microplate BCA method.
Preparation	Recombinant protein was captured through anti-DDK affinity column followed by conventional chromatography steps.
Full Length	Full L.
GENE INFORMATION	
Gene Name	MT2A metallothionein 2A [Homo sapiens (human)]
Official Symbol	MT2A
Synonyms	MT2; MT-2; MT-II
Gene ID	4502
mRNA Refseq	NM_005953.5
Protein Refseq	NP_005944.1
MIM	156360
UniProt ID	P02795

 Tel: 1-631-559-9269 1-516-512-3133

 Email: info@creative-biomart.com  Fax: 1-631-938-8127

 45-1 Ramsey Road, Shirley, NY 11967, USA



Coomassie blue staining of purified MT2A protein.

 Tel: 1-631-559-9269 1-516-512-3133

 Email: info@creative-biomart.com  Fax: 1-631-938-8127

 45-1 Ramsey Road, Shirley, NY 11967, USA