

## Recombinant Human MT2A Protein (1-59 aa), His-tagged

Cat. No. MT2A-1464H Lot. No. (See product label)

### SPECIFICATION

<b>Product Overview</b>	Recombinant Human MT2A Protein (1-59 aa) is produced by Yeast expression system. This protein is fused with a 6xHis tag at the N-terminal. Research Area: Epigenetics and Nuclear Signaling. Protein Description: Partial.
<b>Species</b>	Human
<b>Source</b>	Yeast
<b>ProteinLength</b>	1-59 aa
<b>Description</b>	Metallothioneins have a high content of cysteine residues that bind various heavy metals; these proteins are transcriptionally regulated by both heavy metals and glucocorticoids.
<b>Form</b>	Tris-based buffer,50% glycerol
<b>Molecular Mass</b>	7.9 kDa
<b>AA Sequence</b>	MDPNCSCAAGDSCTCAGSCKCKECKCTSCCKKSCCSCPVGCAKCAQGCICKGAS DKCSC
<b>Purity</b>	> 90% as determined by SDS-PAGE.
<b>Notes</b>	Repeated freezing and thawing is not recommended. Store working aliquots at 4 centigrade for up to one week.

 Tel: 1-631-559-9269 1-516-512-3133

 Email: [info@creative-biomart.com](mailto:info@creative-biomart.com)  Fax: 1-631-938-8127

 45-1 Ramsey Road, Shirley, NY 11967, USA

**Storage**

The shelf life is related to many factors, storage state, buffer ingredients, storage temperature and the stability of the protein itself. Generally, the shelf life of liquid form is 6 months at -20 centigrade/-80 centigrade. The shelf life of lyophilized form is 12 months at -20 centigrade/-80 centigrade.

**Concentration**

A hardcopy of COA with reconstitution instruction is sent along with the products.

**GENE INFORMATION****Gene Name**

MT2A metallothionein 2A [ Homo sapiens ]

**Official Symbol**

MT2A

**Synonyms**

MT2A; metallothionein 2A; MT2; MT-2; MT-II;

**Gene ID**

4502

**mRNA Refseq**

NM\_005953

**Protein Refseq**

NP\_005944

**MIM**

156360

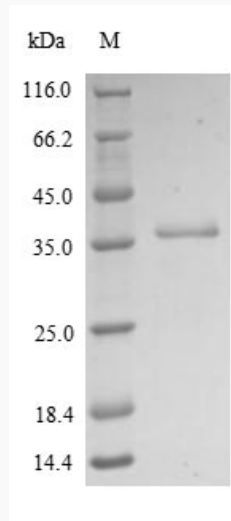
**UniProt ID**

P02795

 Tel: 1-631-559-9269 1-516-512-3133

 Email: [info@creative-biomart.com](mailto:info@creative-biomart.com)  Fax: 1-631-938-8127

 45-1 Ramsey Road, Shirley, NY 11967, USA



(Tris-Glycine gel) Discontinuous SDS-PAGE (reduced) with 5% enrichment gel and 15% separation gel.

 Tel: 1-631-559-9269 1-516-512-3133

 Email: [info@creative-biomart.com](mailto:info@creative-biomart.com)  Fax: 1-631-938-8127

 45-1 Ramsey Road, Shirley, NY 11967, USA