

Recombinant Full Length Human MTA1 Protein, C-Flag-tagged

Cat. No. MTA1-1137HFL Lot. No. (See product label)

SPECIFICATION

Product Overview	Recombinant Full Length Human MTA1 Protein, fused to Flag-tag at C-terminus, was expressed in Mammalian cells.
Species	Human
Source	Mammalian Cells
Description	<p>This gene encodes a protein that was identified in a screen for genes expressed in metastatic cells, specifically, mammary adenocarcinoma cell lines. Expression of this gene has been correlated with the metastatic potential of at least two types of carcinomas although it is also expressed in many normal tissues. The role it plays in metastasis is unclear. It was initially thought to be the 70kD component of a nucleosome remodeling deacetylase complex, NuRD, but it is more likely that this component is a different but very similar protein. These two proteins are so closely related, though, that they share the same types of domains. These domains include two DNA binding domains, a dimerization domain, and a domain commonly found in proteins that methylate DNA. The profile and activity of this gene product suggest that it is involved in regulating transcription and that this may be accomplished by chromatin remodeling. Two transcript variants encoding different isoforms have been found for this gene.</p>
Form	25 mM Tris HCl, pH 7.3, 100 mM glycine, 10% glycerol.
Molecular Mass	80.6 kDa

 Tel: 1-631-559-9269 1-516-512-3133

 Email: info@creative-biomart.com  Fax: 1-631-938-8127

 45-1 Ramsey Road, Shirley, NY 11967, USA

AA Sequence

MAANMYRVGDYVYFENSSSNPYLIRRIEELNKTANGNVEAKVVCFYRRRDISSTLIAL
 ADKHATLSVCYK AGPGADNGEEGEIEEEMENPEMVDLPEKCLKHQLRHRELFLSRQL
 ESLPATHIRGKCSVTLLNETESLKSYS LEREDFFFYSLVYDPQQKTLLADKGEIRVGN
 RYQADITDLLKEGEEDGRDQSRLETQVWEAHNPLTDKQI DQFLVVARSVGTFARAL
 DCSSSVRQPSLHMSAAAAASRDITLFHAMDTLHKNIYDISKAISALVPQGGPVL CRDE
 MEEWSASEANLFEEALEKYGKDFTDIQQDFLPWKSLTSIIEYYYYMWKTTDRYVQQK
 RLKAAEAESK LKQVYIPNYPNPNPNQISVNNIKAGVVNGTGAPGQSPGAGRACESC
 YTTQSYQWYSWGPPNMQCRLCASC WTYWKKYGGLKMPTRLDGERPGPNRSNM
 SPHGLPARSSGSPKFAMKTRQAFYLHTTKLTRIARRLCREIL RPWHAARHPYLPINS
 AAIAECTARLPEASQSPLVLKQAVRKPLEAVLRYLETHPRPPKPDVKS SVSSVL SS
 LTPAKVAPVINNGSPTILGKRSYEQHNGVDGNM KKRLLMPSRGLANHGQTRHMGP
 SRNLLLNGKSYPT KVRLIRGGSLPPVKRRRMNWIDAPDDVFYMATEETRKIRKLLSS
 SETKRAARRPYKPIALRQS QALPPRP
 PPPAPVNDEPIVIEDTRTRPLEQKLISEEDLAANDILDYKDDDDKV

Purity

> 80% as determined by SDS-PAGE and Coomassie blue staining.

Stability

Stable for 12 months from the date of receipt of the product under proper storage and handling conditions. Avoid repeated freeze-thaw cycles.

Storage

Store at -80 centigrade.

Concentration

>50 ug/mL as determined by microplate BCA method.

Preparation

Recombinant protein was captured through anti-DDK affinity column followed by conventional chromatography steps.

Protein Families

Druggable Genome, Transcription Factors

Full Length

Full L.

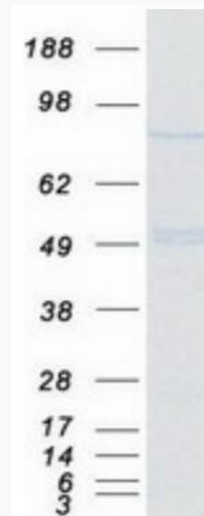
 Tel: 1-631-559-9269 1-516-512-3133

 Email: info@creative-biomart.com  Fax: 1-631-938-8127

 45-1 Ramsey Road, Shirley, NY 11967, USA

GENE INFORMATION

Gene Name	MTA1 metastasis associated 1 [Homo sapiens (human)]
Official Symbol	MTA1
Synonyms	metastasis associated 1; metastasis associated gene 1 protein; metastasis associated protein
Gene ID	9112
mRNA Refseq	NM_004689.4
Protein Refseq	NP_004680.2
MIM	603526
UniProt ID	Q13330



Tel: 1-631-559-9269 1-516-512-3133

Email: info@creative-biomart.com Fax: 1-631-938-8127

45-1 Ramsey Road, Shirley, NY 11967, USA



Coomassie blue staining of purified MTA1 protein.

 Tel: 1-631-559-9269 1-516-512-3133

 Email: info@creative-biomart.com  Fax: 1-631-938-8127

 45-1 Ramsey Road, Shirley, NY 11967, USA