

Recombinant Human MTA1 protein, GST-tagged

Cat. No. MTA1-2455H Lot. No. (See product label)

SPECIFICATION

Product Overview Human MTA1 full-length ORF (AAH06177.1, 1 a.a. - 255 a.a.) recombinant protein with GST-tag at N-terminal.

Species Human

Source Wheat Germ

Description

This gene encodes a protein that was identified in a screen for genes expressed in metastatic cells, specifically, mammary adenocarcinoma cell lines. Expression of this gene has been correlated with the metastatic potential of at least two types of carcinomas although it is also expressed in many normal tissues. The role it plays in metastasis is unclear. It was initially thought to be the 70kD component of a nucleosome remodeling deacetylase complex, NuRD, but it is more likely that this component is a different but very similar protein. These two proteins are so closely related, though, that they share the same types of domains. These domains include two DNA binding domains, a dimerization domain, and a domain commonly found in proteins that methylate DNA. The profile and activity of this gene product suggest that it is involved in regulating transcription and that this may be accomplished by chromatin remodeling. Two transcript variants encoding different isoforms have been found for this gene.

Form 50 mM Tris-HCl, 10 mM reduced Glutathione, pH=8.0 in the elution buffer.

Molecular Mass 55.1 kDa

 Tel: 1-631-559-9269 1-516-512-3133

 Email: info@creative-biomart.com  Fax: 1-631-938-8127

 45-1 Ramsey Road, Shirley, NY 11967, USA

AA Sequence

MKTRQAFYLHTTKLTRIARRLCREILRPWHAARHPYLPINSAAIKAECTARLPEASQS
 PLVLKQAVRKPLEAVLRYLETHPRPPKPDVPKSVSSVLSSLTPAKVAPVINNGSPTIL
 GKRSYEQHNGVDGNMKKRLLMPSRGTYLGLANHGQTRHMGPSRLLLLNGKSYPT
 KVRLIRGGSLPPVKRRRMNWIDAPDDVFYMATEETRKIRKLLSSSETKRAARRPYKP
 IALRQSQUALPPRPPPPAPVNDEPIVIED

Applications AP, Array, ELISA, WB-Re

Storage Store at -80 centigrade. Aliquot to avoid repeated freezing and thawing.

GENE INFORMATION

Gene Name [MTA1 metastasis associated 1 \[Homo sapiens \]](#)

Official Symbol [MTA1](#)

Synonyms MTA1; metastasis associated 1; metastasis-associated protein MTA1

Gene ID [9112](#)

mRNA Refseq [BC006177.1](#)

Protein Refseq [AAH06177.1](#)

MIM [603526](#)

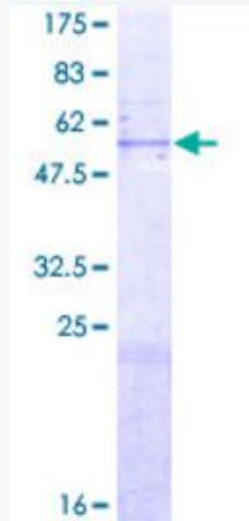
UniProt ID [Q13330](#)

 Tel: 1-631-559-9269 1-516-512-3133

 Email: info@creative-biomart.com  Fax: 1-631-938-8127

 45-1 Ramsey Road, Shirley, NY 11967, USA

12.5% SDS-PAGE
Stained with
Coomassie Blue.



 Tel: 1-631-559-9269 1-516-512-3133

 Email: info@creative-biomart.com  Fax: 1-631-938-8127

 45-1 Ramsey Road, Shirley, NY 11967, USA