

## Recombinant Human MTA1 protein, GST-tagged

Cat. No. MTA1-2459H Lot. No. (See product label)

### SPECIFICATION

<b>Product Overview</b>	Human MTA1 partial ORF (NP_003122, 542 a.a. - 632 a.a.) recombinant protein with GST-tag at N-terminal.
<b>Species</b>	Human
<b>Source</b>	Wheat Germ
<b>Description</b>	<p>This gene encodes a protein that was identified in a screen for genes expressed in metastatic cells, specifically, mammary adenocarcinoma cell lines. Expression of this gene has been correlated with the metastatic potential of at least two types of carcinomas although it is also expressed in many normal tissues. The role it plays in metastasis is unclear. It was initially thought to be the 70kD component of a nucleosome remodeling deacetylase complex, NuRD, but it is more likely that this component is a different but very similar protein. These two proteins are so closely related, though, that they share the same types of domains. These domains include two DNA binding domains, a dimerization domain, and a domain commonly found in proteins that methylate DNA. The profile and activity of this gene product suggest that it is involved in regulating transcription and that this may be accomplished by chromatin remodeling. Two transcript variants encoding different isoforms have been found for this gene.</p>
<b>Form</b>	50 mM Tris-HCl, 10 mM reduced Glutathione, pH=8.0 in the elution buffer.
<b>Molecular Mass</b>	35.75 kDa

 Tel: 1-631-559-9269 1-516-512-3133

 Email: [info@creative-biomart.com](mailto:info@creative-biomart.com)  Fax: 1-631-938-8127

 45-1 Ramsey Road, Shirley, NY 11967, USA

<b>AA Sequence</b>	ETHPRPPKDPVKS <sup>V</sup> SSVLSSLTPAKVAPVINNGSPTILGKRSYEQHNGVDGNMKK RLLMPSRGLANHGQTRHMGPSRNLLLNKSYPTKV
--------------------	--

<b>Storage</b>	Store at -80 centigrade. Aliquot to avoid repeated freezing and thawing.
----------------	--

## GENE INFORMATION

<b>Gene Name</b>	MTA1 metastasis associated 1 [ Homo sapiens ]
------------------	---

<b>Official Symbol</b>	MTA1
------------------------	------

<b>Synonyms</b>	MTA1; metastasis associated 1; metastasis-associated protein MTA1
-----------------	---

<b>Gene ID</b>	9112
----------------	------

<b>mRNA Refseq</b>	NM_003131
--------------------	-----------

<b>Protein Refseq</b>	NP_003122
-----------------------	-----------

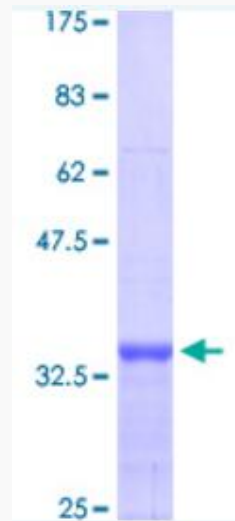
<b>MIM</b>	603526
------------	--------

<b>UniProt ID</b>	Q13330
-------------------	--------

 Tel: 1-631-559-9269 1-516-512-3133

 Email: [info@creative-biomart.com](mailto:info@creative-biomart.com)  Fax: 1-631-938-8127

 45-1 Ramsey Road, Shirley, NY 11967, USA



 Tel: 1-631-559-9269 1-516-512-3133

 Email: [info@creative-biomart.com](mailto:info@creative-biomart.com)  Fax: 1-631-938-8127

 45-1 Ramsey Road, Shirley, NY 11967, USA