

Recombinant Human MTAP Protein, His-tagged

Cat. No. MTAP-386H Lot. No. (See product label)

SPECIFICATION

Product Overview	Recombinant Human MTAP(Lys11~Pro256) fused with His tag at N-terminal was expressed in E. coli.
Species	Human
Source	E.coli
ProteinLength	Lys11~Pro256
Description	This gene encodes an enzyme that plays a major role in polyamine metabolism and is important for the salvage of both adenine and methionine. The encoded enzyme is deficient in many cancers because this gene and the tumor suppressor p16 gene are co-deleted. Multiple alternatively spliced transcript variants have been described for this gene, but their full-length natures remain unknown.
Form	PBS, pH7.4, containing 0.01% SKL, 1mM DTT, 5% Trehalose and Proclin300.
Molecular Mass	30.9kDa
Endotoxin	<1.0EU per 1g (determined by the LAL method)
Purity	> 92%
Applications	Positive Control; Immunogen; SDS-PAGE; WB. If bio-activity of the protein is needed, please check active protein.

 Tel: 1-631-559-9269 1-516-512-3133

 Email: info@creative-biomart.com  Fax: 1-631-938-8127

 45-1 Ramsey Road, Shirley, NY 11967, USA

Stability The thermal stability is described by the loss rate. The loss rate was determined by accelerated thermal degradation test, that is, incubate the protein at 37 centigrade for 48h, and no obvious degradation and precipitation were observed. The loss rate is less than 5% within the expiration date under appropriate storage condition.

Storage Avoid repeated freeze/thaw cycles. Store at 2-8 centigrade for one month. Aliquot and store at -80 centigrade for 12 months.

Reconstitution Reconstitute in PBS or others.

GENE INFORMATION

Gene Name [MTAP methylthioadenosine phosphorylase \[Homo sapiens \]](#)

Official Symbol [MTAP](#)

Synonyms MTAP; methylthioadenosine phosphorylase; S-methyl-5-thioadenosine phosphorylase; c86fus; MSAP; MTAPase; MTA phosphorylase; MeSAdo phosphorylase; 5-methylthioadenosine phosphorylase;

Gene ID [4507](#)

mRNA Refseq [NM_002451](#)

Protein Refseq [NP_002442](#)

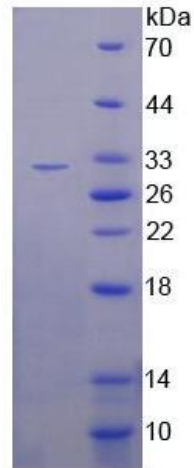
MIM [156540](#)

UniProt ID [Q13126](#)

 Tel: 1-631-559-9269 1-516-512-3133

 Email: info@creative-biomart.com  Fax: 1-631-938-8127

 45-1 Ramsey Road, Shirley, NY 11967, USA



15% SDS-PAGE

Tel: 1-631-559-9269 1-516-512-3133

Email: info@creative-biomart.com Fax: 1-631-938-8127

45-1 Ramsey Road, Shirley, NY 11967, USA