

Recombinant Full Length Human MTAP Protein, C-Flag-tagged

Cat. No. MTAP-405HFL **Lot. No.** (See product label)

SPECIFICATION

| | |
|-------------------------|--|
| Product Overview | Recombinant Full Length Human MTAP Protein, fused to Flag-tag at C-terminus, was expressed in Mammalian cells. |
| Species | Human |
| Source | Mammalian Cells |
| Description | This gene encodes an enzyme that plays a major role in polyamine metabolism and is important for the salvage of both adenine and methionine. The encoded enzyme is deficient in many cancers because this gene and the tumor suppressor p16 gene are co-deleted. Multiple alternatively spliced transcript variants have been described for this gene, but their full-length natures remain unknown. |
| Form | 25 mM Tris HCl, pH 7.3, 100 mM glycine, 10% glycerol. |
| Molecular Mass | 31.1 kDa |
| AA Sequence | MASGTTTTAVKIGIIGGTGLDDPEILEGRTEKYVDTPFGKPSDALILGKIKNVDCILLAR HGRQHTIMPS KVNYQANIWALKEEGCTHVIVTTACGSLREEIQPGDIVIIDQFIDRTT MRPQSFYDGS HSCARGVCHIPM AEPFCPKTREVLIETAKKLGLRCHSKGTMVTIEG PRFSSRAESFMFRTWGADVINMTTVPEVVLAKEAGI CYASIAMATDYDCWKEHEEA VSVDRVLKTLKENANKAKSLLLTTIPQIGSTEWSETLHNLKNMAQFSVLL PRHTRTRPLEQKLISEEDLAANDILDYKDDDDKV |
| Purity | > 80% as determined by SDS-PAGE and Coomassie blue staining. |

 Tel: 1-631-559-9269 1-516-512-3133

 Email: info@creative-biomart.com  Fax: 1-631-938-8127

 45-1 Ramsey Road, Shirley, NY 11967, USA

| | |
|-------------------------|---|
| Stability | Stable for 12 months from the date of receipt of the product under proper storage and handling conditions. Avoid repeated freeze-thaw cycles. |
| Storage | Store at -80 centigrade. |
| Concentration | >50 ug/mL as determined by microplate BCA method. |
| Preparation | Recombinant protein was captured through anti-DDK affinity column followed by conventional chromatography steps. |
| Protein Families | Druggable Genome |
| Protein Pathways | Cysteine and methionine metabolism, Metabolic pathways |
| Full Length | Full L. |

GENE INFORMATION

| | |
|------------------------|---|
| Gene Name | MTAP methylthioadenosine phosphorylase [Homo sapiens (human)] |
| Official Symbol | MTAP |
| Synonyms | BDMF; MSAP; DMSFH; LGMBF; DMSMFH; c86fus; HEL-249 |
| Gene ID | 4507 |
| mRNA Refseq | NM_002451.4 |
| Protein Refseq | NP_002442.2 |
| MIM | 156540 |

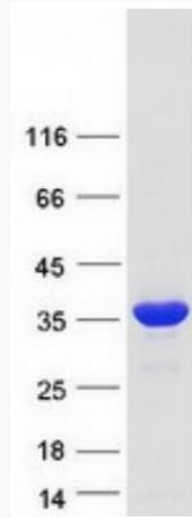
 Tel: 1-631-559-9269 1-516-512-3133

 Email: info@creative-biomart.com  Fax: 1-631-938-8127

 45-1 Ramsey Road, Shirley, NY 11967, USA

UniProt ID

Q13126



Coomassie blue staining of purified MTAP protein.

 Tel: 1-631-559-9269 1-516-512-3133

 Email: info@creative-biomart.com  Fax: 1-631-938-8127

 45-1 Ramsey Road, Shirley, NY 11967, USA