

Recombinant Human MTDH Protein, GST-tagged

Cat. No. MTDH-5690H **Lot. No.** (See product label)

SPECIFICATION

Product Overview	Human MTDH full-length ORF (NP_848927.1, 1 a.a. - 582 a.a.) recombinant protein with GST-tag at N-terminal.
Species	Human
Source	Wheat Germ
Description	MTDH (Metadherin) is a Protein Coding gene. Diseases associated with MTDH include Nervous System Disease and Central Nervous System Disease. Among its related pathways are Cytoskeleton remodeling Regulation of actin cytoskeleton by Rho GTPases and Adhesion. GO annotations related to this gene include poly(A) RNA binding and double-stranded RNA binding.
Molecular Mass	90.2 kDa
AA Sequence	<p>MAARSWQDELAQQAEEGSARLREMLSVGLGFLRTELGLDLGLEPKRYPGWVILVG TGALGLLLLLFLLYGWAAACAGSRKKRRSPPRKREEAAVPAAPDDLALLKNLRS EEQKKKNRKKLSEKPKPNGRTVEVAEGEAVRTPQSVTAKQPPEIDKKNEKSKKNKK KSKSDAKAVQNSSRHGKEVDEGAWETKISHREKRQQRKRDVLTDSGSLDSTIPG IENTITVTTEQLTTASFPVGSKKNKGDSLNVQVSNFKSGKGDSTLQVSSGLNENLT VNGGGWNEKSVKLSSQISAGEEKWNSVSPASAGKRKAEPSAWSQDTGDANTNGK DWGRSWSDRSIFSGIGSTAEPVSQSTTSQDYQWDVSRNQPYIDDEWGLNGLSSAD PNSDWNAPAEWGNWVDEERASLLKSQEPIDDDQKVSDDDKEKGEALPTGKSKK KKKKKKKQGEDNSTAQDTEELEKEIREDLPVNTSKTRPKQEKAFLKTISTSDPAEVL</p>

 Tel: 1-631-559-9269 1-516-512-3133

 Email: info@creative-biomart.com  Fax: 1-631-938-8127

 45-1 Ramsey Road, Shirley, NY 11967, USA

VKNSQPIKTLPPATSTEPSVILSKSDSDKSSSQVPPILQETDKSKSNTKQNSVPPSQT
KSETSWESPKQIKKKKKARRET

Applications	Enzyme-linked Immunoabsorbent Assay Western Blot (Recombinant protein) Antibody Production Protein Array
Notes	Best use within three months from the date of receipt of this protein.
Storage	Store at -80 centigrade. Aliquot to avoid repeated freezing and thawing.
Storage Buffer	50 mM Tris-HCl, 10 mM reduced Glutathione, pH=8.0 in the elution buffer.

GENE INFORMATION

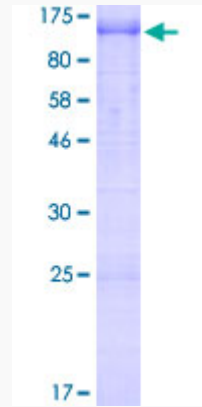
Gene Name	MTDH metadherin [Homo sapiens]
Official Symbol	MTDH
Synonyms	MTDH; metadherin; protein LYRIC; 3D3; AEG 1; LYRIC; 3D3/LYRIC; metastasis adhesion protein; astrocyte elevated gene-1 protein; lysine-rich CEACAM1 co-isolated protein; AEG1; AEG-1; LYRIC/3D3;
Gene ID	92140
mRNA Refseq	NM_178812
Protein Refseq	NP_848927
MIM	610323

UniProt ID

Q86UE4

Quality Control

Testing:



12.5% SDS-PAGE Stained with Coomassie Blue.

 Tel: 1-631-559-9269 1-516-512-3133

 Email: info@creative-biomart.com  Fax: 1-631-938-8127

 45-1 Ramsey Road, Shirley, NY 11967, USA