

Recombinant Human MTERF Protein, GST-tagged

Cat. No. MTERF-5691H Lot. No. (See product label)

SPECIFICATION

Product Overview	Human MTERF full-length ORF (AAH00965, 1 a.a. - 399 a.a.) recombinant protein with GST-tag at N-terminal.
Species	Human
Source	Wheat Germ
Description	This gene encodes a mitochondrial transcription termination factor. This protein participates in attenuating transcription from the mitochondrial genome; this attenuation allows higher levels of expression of 16S ribosomal RNA relative to the tRNA gene downstream. The product of this gene has three leucine zipper motifs bracketed by two basic domains that are all required for DNA binding. There is evidence that, for this protein, the zippers participate in intramolecular interactions that establish the three-dimensional structure required for DNA binding. [provided by RefSeq]
Molecular Mass	69.63 kDa
AA Sequence	<p>MQSLSLGQTSISKGLNYLTIMAPGNLWHMRNNFLFGSRCWMTRFSAENIFKSVSFR LFGVKCHNTDSEPLKNEDLLKNLLTMGVDIDMARKRQPGVFHRMITNEQDLKMFLLS KGASKEVIASIIISRYPRAITRTPENLSKRWDLWRKIVTSDLEIVNILERSPEFFRSNNN LNLENNIKFLYSVGLTRKCLCRLLTNAPRTFSNSLDLNKQMVEFLQAAGLSLGHNDP TDFVRKIIFKNPFILIQSTKRVKANIEFLRSTFNLNSEELLVLICGPGAIEILDLSNDYARR SYANIKEKLFSLGCTEEEVQKFVLSYPDVIFLAEKKFNDEIDCLMEENISISQIIENPRV</p>

 Tel: 1-631-559-9269 1-516-512-3133

 Email: info@creative-biomart.com  Fax: 1-631-938-8127

 45-1 Ramsey Road, Shirley, NY 11967, USA

LDSSISTLKSRIKELVNAGCNLSTLNITLLSWSKKRYEAKLKKLSRFA

Applications

Enzyme-linked Immunoabsorbent Assay
 Western Blot (Recombinant protein)
 Antibody Production
 Protein Array

Notes

Best use within three months from the date of receipt of this protein.

Storage

Store at -80 centigrade. Aliquot to avoid repeated freezing and thawing.

Storage Buffer

50 mM Tris-HCl, 10 mM reduced Glutathione, pH=8.0 in the elution buffer.

GENE INFORMATION

Gene Name

[MTERF mitochondrial transcription termination factor \[Homo sapiens \]](#)

Official Symbol

[MTERF](#)

Synonyms

MTERF; mitochondrial transcription termination factor; transcription termination factor, mitochondrial; mitochondrial transcription termination factor 1; MGC131634;

Gene ID

[7978](#)

mRNA Refseq

[NM_006980](#)

Protein Refseq

[NP_008911](#)

MIM

[602318](#)

UniProt ID

[Q99551](#)

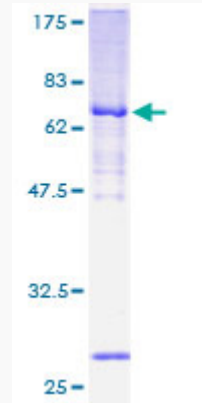
 Tel: 1-631-559-9269 1-516-512-3133

 Email: info@creative-biomart.com  Fax: 1-631-938-8127

 45-1 Ramsey Road, Shirley, NY 11967, USA

Quality Control

Testing:



12.5% SDS-PAGE Stained with Coomassie Blue.

 Tel: 1-631-559-9269 1-516-512-3133

 Email: info@creative-biomart.com  Fax: 1-631-938-8127

 45-1 Ramsey Road, Shirley, NY 11967, USA