

Recombinant Human MTERFD1 Protein, GST-tagged

Cat. No. MTERFD1-5693H Lot. No. (See product label)

SPECIFICATION

Product Overview	Human MTERFD1 full-length ORF (NP_057026.3, 1 a.a. - 417 a.a.) recombinant protein with GST-tag at N-terminal.
Species	Human
Source	Wheat Germ
Description	MTERF3 (Mitochondrial Transcription Termination Factor 3) is a Protein Coding gene. Among its related pathways are Mitochondrial Gene Expression and Pink/Parkin Mediated Mitophagy. GO annotations related to this gene include transcription regulatory region DNA binding and double-stranded DNA binding.
Molecular Mass	74.4 kDa
AA Sequence	<p>MALSAQQIPRWFNSVKLRSLINAAQLTKRFTRPARTLLHGFSAPQISSDNCFLQWG FKTYRTSSLWNSSQSTSSSSQENNSAQSSLLPSMNEQSQKTQNISSFDSELFLEEL DELPPLSPMQPISEEEAIQIIADPPLPPASFTLRDYVDHSETLQKLVLLGVDLSKIEKHP EAANLLLRLDFEKDIKQMLLFLKDVGIEDNQLGAFLTKNHAIFSEDLENLKTRVAYLHS KNFSKADVAQMVRKAPFLLNFSVERLDNRLGFFQKELELSVKKTRDLVRLPRLLTG SLEPVKENMKVYRLELGFKHNEIQHMITRIPKMLTANKMKLTTETDFVHNVMSIPHHII VKFPQVFNTRLFKVKERHLFLTYLGRAQYDPAKPNYISLDKLVSIPEIFCEEIAKASV QDFEKFLKTL</p>
Applications	Enzyme-linked Immunoabsorbent Assay Western Blot (Recombinant protein)

 Tel: 1-631-559-9269 1-516-512-3133

 Email: info@creative-biomart.com  Fax: 1-631-938-8127

 45-1 Ramsey Road, Shirley, NY 11967, USA

Antibody Production
Protein Array

Notes	Best use within three months from the date of receipt of this protein.
Storage	Store at -80 centigrade. Aliquot to avoid repeated freezing and thawing.
Storage Buffer	50 mM Tris-HCl, 10 mM reduced Glutathione, pH=8.0 in the elution buffer.

GENE INFORMATION

Gene Name	MTERFD1 MTERF domain containing 1 [Homo sapiens]
Official Symbol	MTERFD1
Synonyms	CGI-12; mTERF3
Gene ID	51001
mRNA Refseq	NM_015942
Protein Refseq	NP_057026
UniProt ID	Q96E29

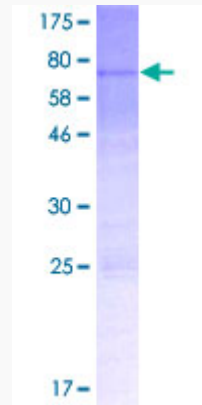
 Tel: 1-631-559-9269 1-516-512-3133

 Email: info@creative-biomart.com  Fax: 1-631-938-8127

 45-1 Ramsey Road, Shirley, NY 11967, USA

Quality Control

Testing:



12.5% SDS-PAGE Stained with Coomassie Blue.

 Tel: 1-631-559-9269 1-516-512-3133

 Email: info@creative-biomart.com  Fax: 1-631-938-8127

 45-1 Ramsey Road, Shirley, NY 11967, USA