

Recombinant Human MTF2 Protein, His&GST-tagged

Cat. No. MTF2-1796H Lot. No. (See product label)

SPECIFICATION

Product Overview	Recombinant Human MTF2 Protein (Met1-Ser593) with N-His&GST tag was expressed in E. coli.
Species	Human
Source	E.coli
ProteinLength	Met1-Ser593
Description	Enables methylated histone binding activity and transcription corepressor binding activity. Predicted to be involved in several processes, including regulation of histone H3-K27 methylation; regulation of transcription by RNA polymerase II; and segment specification. Predicted to act upstream of or within cellular response to leukemia inhibitory factor. Located in cytoplasm; focal adhesion; and nucleoplasm.
Form	Freeze-dried powder
Molecular Mass	Predicted Molecular Mass: 97.1 kDa Accurate Molecular Mass: 97 kDa
Purity	> 95%
Applications	Positive Control; Immunogen; SDS-PAGE; WB.
Stability	The thermal stability is described by the loss rate. The loss rate was determined by

 Tel: 1-631-559-9269 1-516-512-3133

 Email: info@creative-biomart.com  Fax: 1-631-938-8127

 45-1 Ramsey Road, Shirley, NY 11967, USA

accelerated thermal degradation test, that is, incubate the protein at 37 centigrade for 48h, and no obvious degradation and precipitation were observed. The loss rate is less than 5% within the expiration date under appropriate storage condition.

Storage

Avoid repeated freeze/thaw cycles. Store at 2-8 centigrade for one month. Aliquot and store at -80 centigrade for 12 months.

Storage Buffer

20mM Tris, 150mM NaCl, pH8.0, containing 1mM EDTA, 1mM DTT, 0.01% SKL, 5% Trehalose and Proclin300.

Reconstitution

Reconstitute in 20mM Tris, 150mM NaCl (pH8.0) to a concentration of 0.1-1.0 mg/mL. Do not vortex.

GENE INFORMATION

Gene Name

[MTF2 metal response element binding transcription factor 2 \[Homo sapiens \(human\) \]](#)

Official Symbol

[MTF2](#)

Synonyms

MTF2; metal response element binding transcription factor 2; metal-response element-binding transcription factor 2; M96; PCL2; polycomb like 2; hPCI2; polycomb-like 2; polycomb-like protein 2; putative DNA binding protein; metal regulatory transcription factor 2; metal-response element DNA-binding protein M96; metal response element-binding transcription factor 2; dJ976O13.2; RP5-976O13.1;

Gene ID

[22823](#)

mRNA Refseq

[NM_001164391](#)

Protein Refseq

[NP_001157863](#)

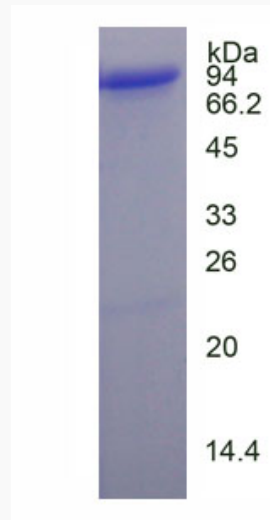
 Tel: 1-631-559-9269 1-516-512-3133

 Email: info@creative-biomart.com  Fax: 1-631-938-8127

 45-1 Ramsey Road, Shirley, NY 11967, USA

MIM 609882

UniProt ID Q9Y483



Tel: 1-631-559-9269 1-516-512-3133

Email: info@creative-biomart.com Fax: 1-631-938-8127

45-1 Ramsey Road, Shirley, NY 11967, USA