

Recombinant Human MTF2 Protein, GST-tagged

Cat. No. MTF2-5698H **Lot. No.** (See product label)

SPECIFICATION

Product Overview	Human MTF2 full-length ORF (AAH10013.1, 1 a.a. - 536 a.a.) recombinant protein with GST-tag at N-terminal.
Species	Human
Source	Wheat Germ
Description	MTF2 (Metal Response Element Binding Transcription Factor 2) is a Protein Coding gene. Among its related pathways are Mesodermal Commitment Pathway and Interactome of polycomb repressive complex 2 (PRC2). GO annotations related to this gene include methylated histone binding. An important paralog of this gene is PHF19.
Molecular Mass	84.7 kDa
AA Sequence	MRDSTGAGNSLVHKRSPLRRNQKTPTSLTKLSLQDGHKAKKPACKFEEGQDVLAR WSDGLFYLGTIKKINILKQSCFIIFEDSSKSWVLWKDIQTGATGSGEMVCTICQEEYS EAPNEMVICDKCGQGYHQLCHTPHIDSSVIDSDEKWLCRQCVFATTTKRGGALKKG PNAKALQVMKQTLPYSVADLEWDAGHKTNVQQCYCYCGPGDWYKMLQCCCKCK QWFHEACVQCLQKPMFLGDRFYTFICSVCSGPEYKRLPLQWVDIAHLCLYNLSVI HKKKYFDSELELMTYINENWDRHLPGELADTPKSERYEHVLEALNDYKTMEVSNIE KKGKKKSVGRPPGPYTRKMIQKTAEPKLLDKESISENPTLDLPCSIGRTEGTAHSSNT SDVDFTGASSAKETTSSSISRHYGLSDSRKRTRTRGRSWPAAIPHLRRRRRGRLLPRA LQTQNSEIVKDDEGKEDYQFDELNTEILNNLADQELQLNHLKNSITSYFGAAGRIACG

 Tel: 1-631-559-9269 1-516-512-3133

 Email: info@creative-biomart.com  Fax: 1-631-938-8127

 45-1 Ramsey Road, Shirley, NY 11967, USA

EKYRVLARRVTLDGKVQYLVEWEGATAS

Applications

Enzyme-linked Immunoabsorbent Assay
 Western Blot (Recombinant protein)
 Antibody Production
 Protein Array

Notes

Best use within three months from the date of receipt of this protein.

Storage

Store at -80 centigrade. Aliquot to avoid repeated freezing and thawing.

Storage Buffer

50 mM Tris-HCl, 10 mM reduced Glutathione, pH=8.0 in the elution buffer.

GENE INFORMATION

Gene Name

[MTF2 metal response element binding transcription factor 2 \[Homo sapiens \]](#)

Official Symbol

[MTF2](#)

Synonyms

MTF2; metal response element binding transcription factor 2; metal-response element-binding transcription factor 2; M96; PCL2; polycomb like 2; hPCL2; polycomb-like 2; polycomb-like protein 2; putative DNA binding protein; metal regulatory transcription factor 2; metal-response element DNA-binding protein M96; metal response element-binding transcription factor 2; dJ976O13.2; RP5-976O13.1;

Gene ID

[22823](#)

mRNA Refseq

[NM_001164391](#)

Protein Refseq

[NP_001157863](#)

 Tel: 1-631-559-9269 1-516-512-3133

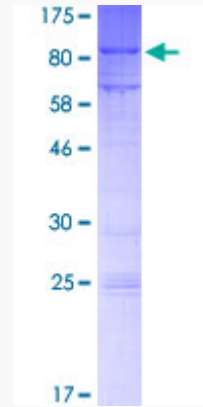
 Email: info@creative-biomart.com  Fax: 1-631-938-8127

 45-1 Ramsey Road, Shirley, NY 11967, USA

MIM 609882

UniProt ID Q9Y483

**Quality Control
Testing:**



12.5% SDS-PAGE Stained with Coomassie Blue.

 Tel: 1-631-559-9269 1-516-512-3133

 Email: info@creative-biomart.com  Fax: 1-631-938-8127

 45-1 Ramsey Road, Shirley, NY 11967, USA