

# Recombinant Human MTFR1 Protein, Myc/DDK-tagged, C13 and N15-labeled

Cat. No. MTFR1-4108H Lot. No. (See product label)

## SPECIFICATION

<b>Product Overview</b>	MTFR1 MS Standard C13 and N15-labeled recombinant protein (NP_001139310) with a C-terminal MYC/DDK tag, was expressed in HEK293 cells.
<b>Species</b>	Human
<b>Source</b>	HEK293
<b>Description</b>	This gene encodes a mitochondrial protein that is characterized by a poly-proline rich region. A chicken homolog of this protein promotes mitochondrial fission and the mouse homolog protects cells from oxidative stress. A related pseudogene of this gene is found on chromosome X.
<b>Molecular Mass</b>	33 kDa
<b>AA Sequence</b>	MLGWIKRLIRMVFQQVGVSMQSI NSHATEWSPSHPGEDAVASFADVGWVAKKEEGE CSARLRTEVRSRPPLQDDLLFFEKAPSRQISLPDLSQEEPQLKTPALANEEALQKICA LENELAALRAQIAKIVTQQEQQLTAGDL DSTTFGTIPPHPPPPPPPLPPPALGLHQ S TSAVDLIKERREKRANAGKTLVKNNPKKPEMPNMLEILKEMNSVKLRSVKRSEQDVK PKPVDATDPAALIAEALKKKFAYRYSQDEVEKGIPKSESEATSERVLF GPHMLK PTGKMKALIENVSDSTRTRPLEQKLISEEDLAANDILDYKDDDDKV
<b>Purity</b>	> 80% as determined by SDS-PAGE and Coomassie blue staining
<b>Stability</b>	Stable for 3 months from receipt of products under proper storage and handling

 Tel: 1-631-559-9269 1-516-512-3133

 Email: [info@creative-biomart.com](mailto:info@creative-biomart.com)  Fax: 1-631-938-8127

 45-1 Ramsey Road, Shirley, NY 11967, USA

conditions.

**Storage** Store at -80 centigrade. Avoid repeated freeze-thaw cycles.

**Concentration** 50 µg/mL as determined by BCA

**Storage Buffer** 100 mM glycine, 25 mM Tris-HCl, pH 7.3.

## GENE INFORMATION

**Gene Name** [MTFR1 mitochondrial fission regulator 1 \[ Homo sapiens \(human\) \]](#)

**Official Symbol** [MTFR1](#)

**Synonyms** MTFR1; mitochondrial fission regulator 1; CHPPR; FAM54A2; KIAA0009; likely ortholog of chicken chondrocyte protein with a poly proline region; chondrocyte protein with a poly-proline region;

**Gene ID** [9650](#)

**mRNA Refseq** [NM\\_001145838](#)

**Protein Refseq** [NP\\_001139310](#)

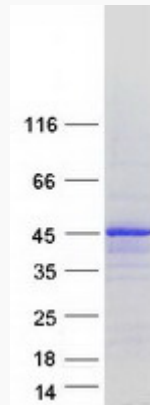
**UniProt ID** [Q15390](#)

 Tel: 1-631-559-9269 1-516-512-3133

 Email: [info@creative-biomart.com](mailto:info@creative-biomart.com)  Fax: 1-631-938-8127

 45-1 Ramsey Road, Shirley, NY 11967, USA

**SDS-PAGE**



 Tel: 1-631-559-9269 1-516-512-3133

 Email: [info@creative-biomart.com](mailto:info@creative-biomart.com)  Fax: 1-631-938-8127

 45-1 Ramsey Road, Shirley, NY 11967, USA